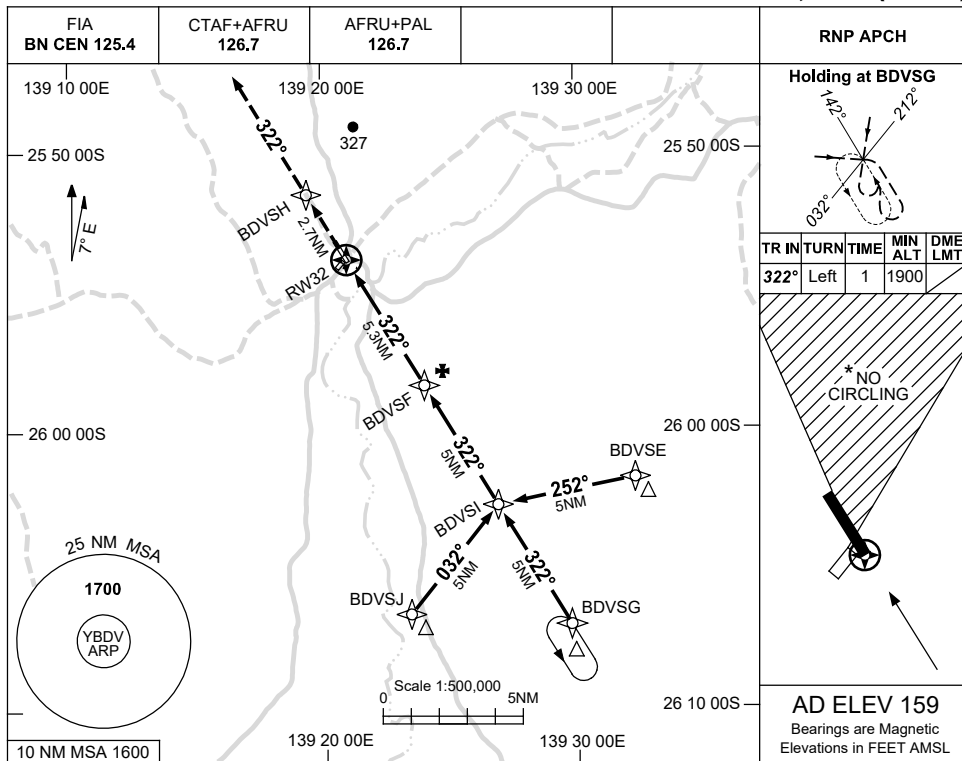


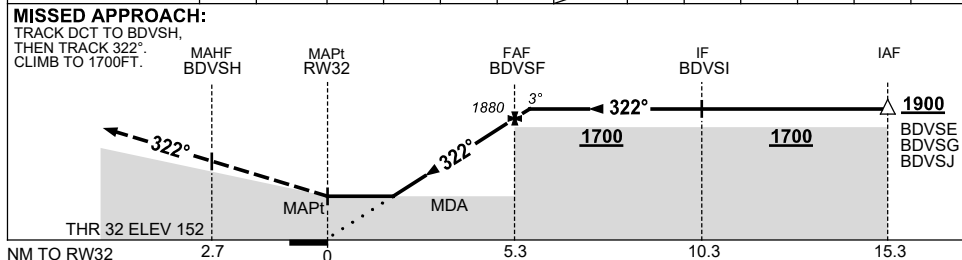
USE QNH

RNP RWY 32
BIRDSVILLE, QLD (YBDV)

8 SEP 2022



NM TO NEXT WPT	0.1	BDVSI	4	3	2	1.5	RW32
ALT (3° APCH PATH)	1900	1880	1480	1160	840	680	



NOTES

CATEGORY	A	B	C	D
LNAV	680 (521-2.9)			NOT APPLICABLE
CIRCLING *	800 (641-2.4)		960 (801-4.0)	
ALTERNATE	(1141-4.4)		(1301-6.0)	

- MAX IAS: INITIAL : 210KT.
- NO CIRCLING IN SECTOR NORTH OF RWY 14 AND RWY 21.
- AWIS (PHONE) 07 3564 3703

Changes: VIS, Editorial.

BDVGN02-172