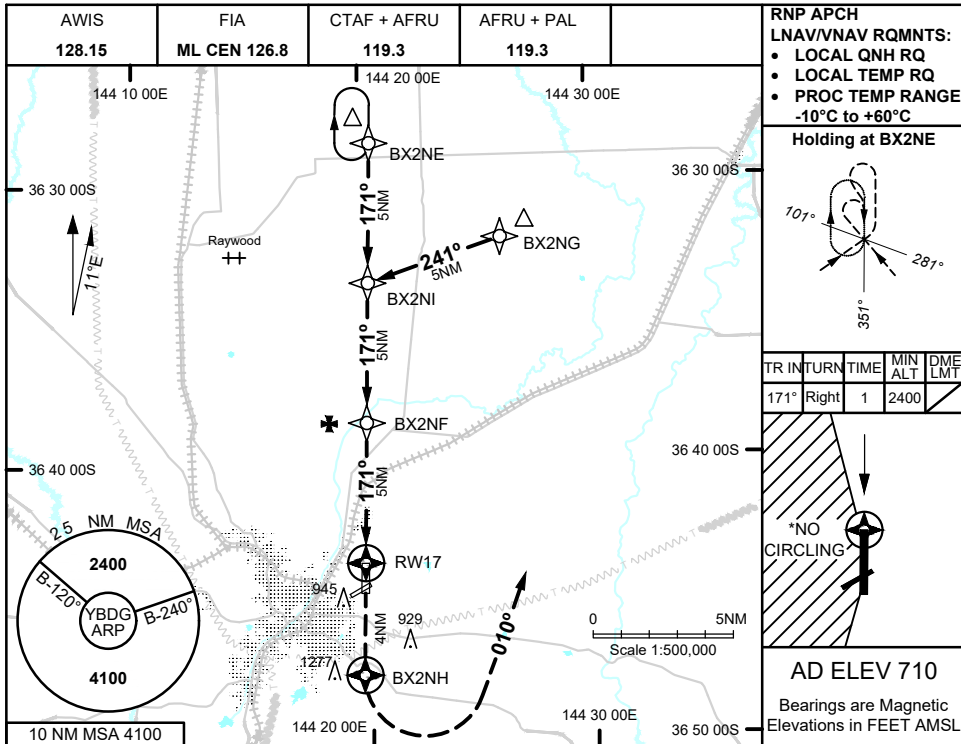
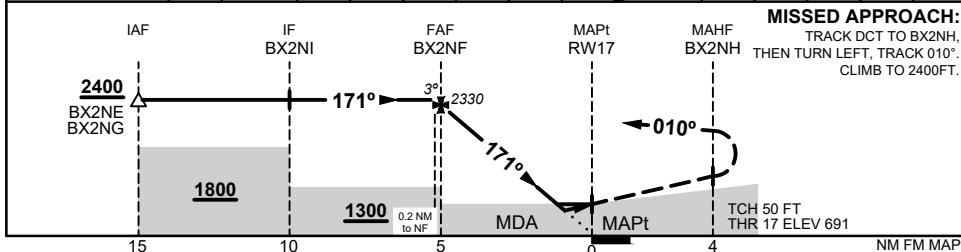


23 MAR 2023



NM TO NEXT WPT	0.2	BX2NF	4	3	2	1.4	1	0.8	RW17				
ALT (3° APCH PATH)	2400	2330	2010	1700	1380	1190	1060	990					



**MISSED APPROACH:**  
 TRACK DCT TO BX2NH,  
 THEN TURN LEFT, TRACK 010°.  
 CLIMB TO 2400FT.

**NOTES**

1. MAX IAS:  
 INITIAL : 210KTS
- \*2.NO CIRCLING WEST  
 OF RWY 17/35

CATEGORY	A	B	C	D
LNAV/VNAV	990 (299 - 1.6)			NOT APPLICABLE
LNAV	1190 (499 - 2.8)			
CIRCLING*	1460 (750 - 2.4)		1790 (1080 - 4.0)	
ALTERNATE	(1250 - 4.4)		(1580 - 6.0)	

Changes: CHART TITLE, Editorial

BDGGN01-174