

**STANDARD INSTRUMENT ARRIVAL (STAR)  
NONUM FIVE VICTOR ARRIVAL (RNAV)  
CAIRNS/CAIRNS INTL, QLD (YBCS)**

**20 MAR 2025**

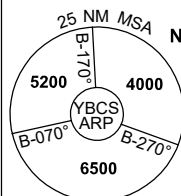
ATIS 113.0 131.1	APP 118.4 126.1	TWR 124.9	SMC 121.7		Bearings are Magnetic Elevations in FEET AMSL
---------------------	--------------------	--------------	--------------	--	--

NOT TO SCALE

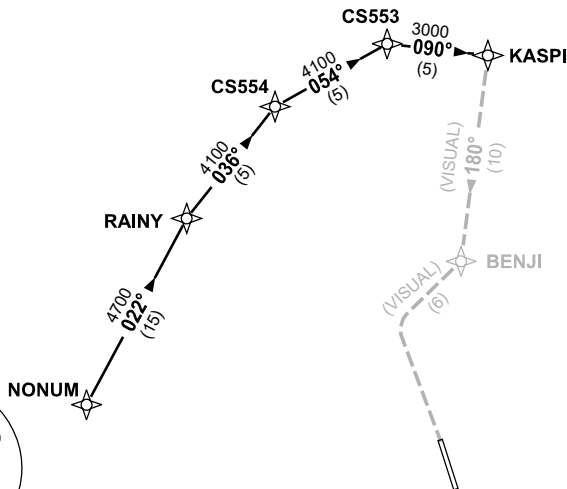


**SPEED  
MAX IAS 250KT  
BELOW 10,000ft**

**RNP 1**



10 NM MSA 5600



**ARRIVAL: NONUM FIVE VICTOR**

**RWY 15:**

- From NONUM, track 022° to RAINY
- Turn RIGHT, track 036° to CS554
- Turn RIGHT, track 054° to CS553
- Turn RIGHT, track 090° to KASPI
- From KASPI, track 180° VISUAL to BENJI then VISUAL track via "Creek Corridor" (Cairns NAP refers)

**COMMUNICATIONS FAILURE: PROCEDURE IN IMC  
IF ABLE CTC CS ATC ON TEL: (07) 3866 3533**

- Squawk 7600, comply with vertical navigation requirements, but not below MSA.
- Track via the latest STAR clearance to the nominated runway, then fly the most suitable approach in accordance with ERS A EMERG Section 1.5.

Changes: REVISED PROC, VALIDITY NUMBER, CHART TITLE, Editorial.

BCSSR20-182