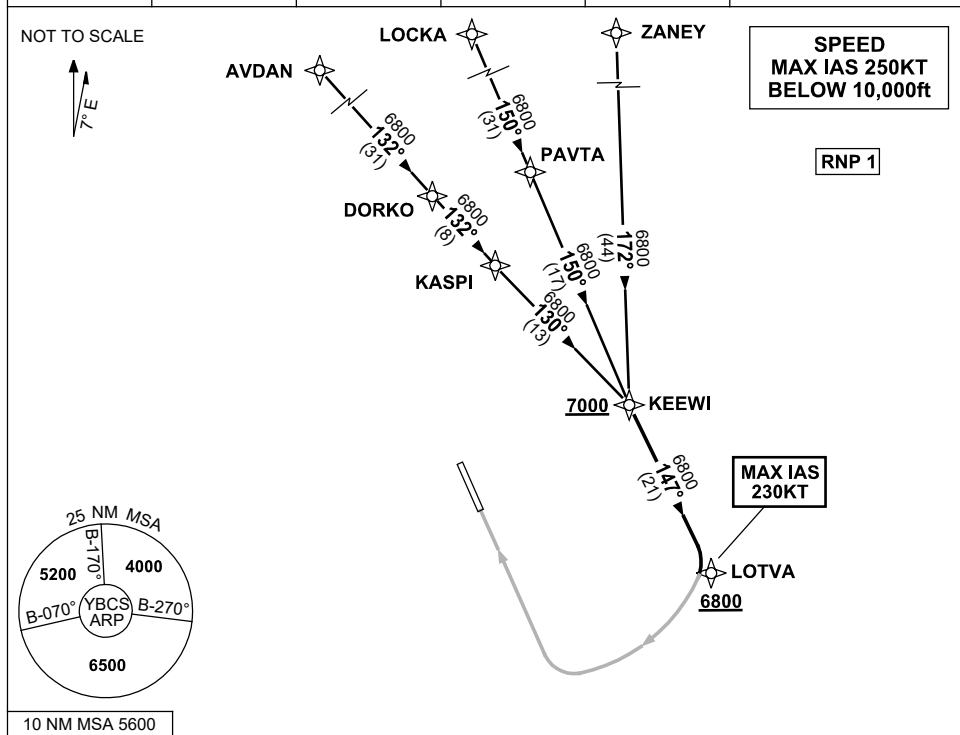


STANDARD INSTRUMENT ARRIVAL (STAR) KEEWI FOUR YANKEE ARRIVAL (RNAV) CAIRNS/CAIRNS INTL, QLD (YBCS)

20 MAR 2025

ATIS 113.0 131.1	APP 118.4 126.1	TWR 124.9	SMC 121.7		Bearings are Magnetic Elevations in FEET AMSL
---------------------	--------------------	--------------	--------------	--	--



TRANSITIONS:

- ZANEY:**
 - From ZANEY track 172° to KEEWI
- LOCKA:**
 - From LOCKA track 150° to PAVTA
 - Track 150° to KEEWI
- AVDAN:**
 - From AVDAN track 132° to DORKO
 - Track 132° to KASPI
 - Track 130° to KEEWI

FOLLOW ARRIVAL INSTRUCTIONS

ARRIVAL:

KEEWI FOUR

RWY 33 YANKEE:

- Cross** KEEWI AT or ABV 7000ft
- From KEEWI track 147° to LOTVA, then via RNP Y RWY 33 (AR)
- Cross** LOTVA AT or ABV 6800ft
- MAX IAS 230KT from LOTVA

COMMUNICATIONS FAILURE: PROCEDURE IN IMC IF ABLE CTC CS ATC ON TEL: (07) 3866 3533

- Squawk 7600, comply with vertical navigation requirements, but not below MSA.
- Track via the latest STAR clearance to the nominated runway, then fly the most suitable approach in accordance with ERS A EMERG Section 1.5.

Changes: VALIDITY INDICATOR, Editorial.

BCSSR17-182