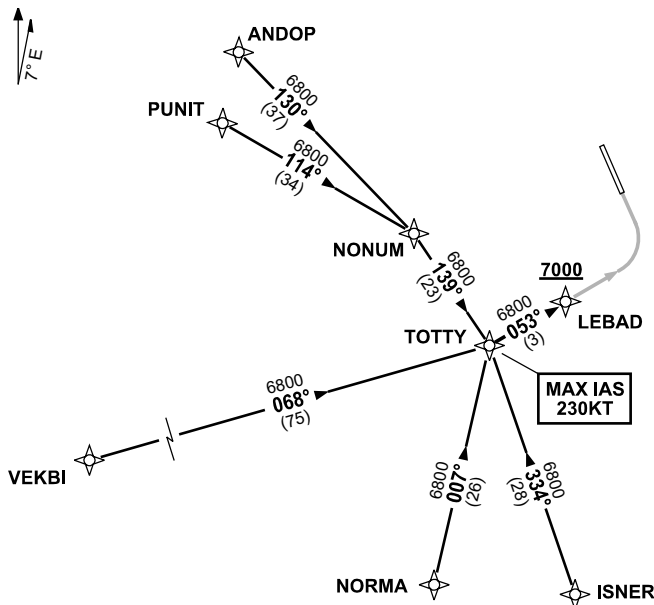


# STANDARD INSTRUMENT ARRIVAL (STAR) TOTTY FIVE WHISKEY ARRIVAL (RNAV) CAIRNS/CAIRNS INTL, QLD (YBCS)

20 MAR 2025

ATIS 113.0 131.1	APP 118.4 126.1	TWR 124.9	SMC 121.7		Bearings are Magnetic Elevations in FEET AMSL
---------------------	--------------------	--------------	--------------	--	--

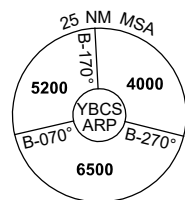
NOT TO SCALE



**SPEED**  
MAX IAS 250KT  
BELOW 10,000ft

RNP 1

MAX IAS  
230KT



10 NM MSA 5600

## TRANSITIONS:

- ANDOP:** From ANDOP to TOTTY
- Track 130° to NONUM,
  - Turn RIGHT, track 139° to TOTTY
- PUNIT:** From PUNIT to TOTTY
- Track 114° to NONUM,
  - Turn RIGHT, track 139° to TOTTY

- VEKBI:** From VEKBI to TOTTY
- Track 068° to TOTTY
- NORMA:** From NORMA to TOTTY
- Track 007° to TOTTY
- ISNER:** From ISNER to TOTTY
- Track 334° to TOTTY

## FOLLOW ARRIVAL INSTRUCTIONS

**ARRIVAL:** TOTTY FIVE

**RWY 33 WHISKEY:** From TOTTY track 053° to LEBAD, thence via RNP W RWY 33 (AR)  
MAX IAS 230KT from TOTTY

## COMMUNICATIONS FAILURE: PROCEDURE IN IMC IF ABLE CTC CS ATC ON TEL: (07) 3866 3533

- Squawk 7600, comply with vertical navigation requirements, but not below MSA.
- Track via the latest STAR clearance to the nominated runway, then fly the most suitable approach in accordance with ERSA EMERG Section 1.5.