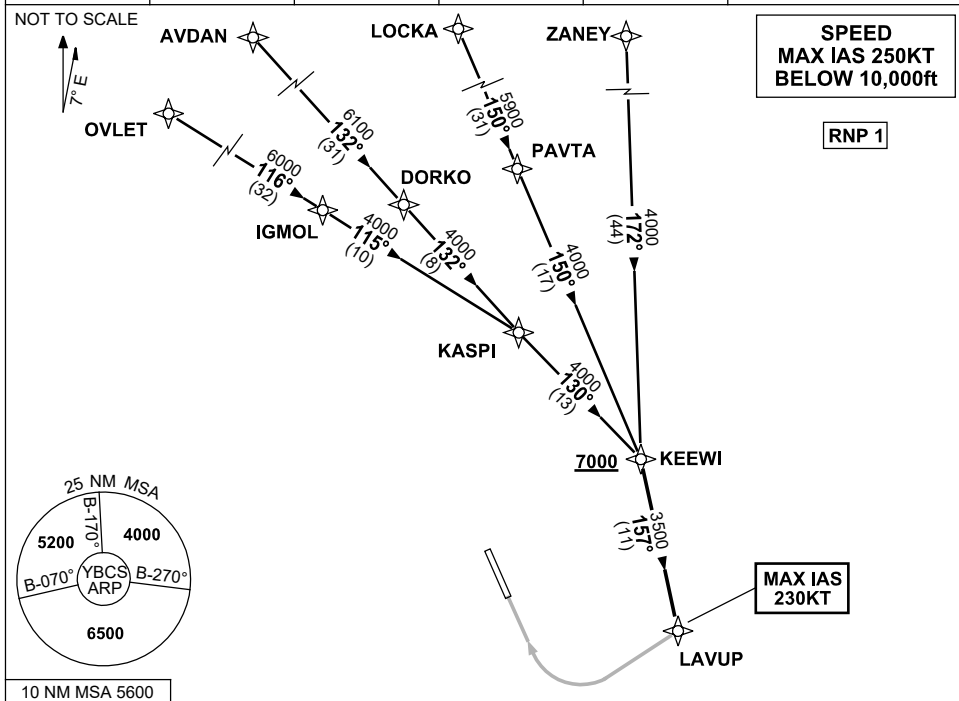


**STANDARD INSTRUMENT ARRIVAL (STAR)  
KEEWI FOUR X-RAY ARRIVAL (RNAV)  
CAIRNS/CAIRNS INTL, QLD (YBCS)**

20 MAR 2025

ATIS 113.0 131.1	APP 118.4 126.1	TWR 124.9	SMC 121.7		Bearings are Magnetic Elevations in FEET AMSL
---------------------	--------------------	--------------	--------------	--	--



**TRANSITIONS:**

- ZANEY:** • From ZANEY track 172° to KEEWI
- LOCKA:** • From LOCKA track 150° to PAVTA  
• Track 150° to KEEWI
- AVDAN:** • From AVDAN track 132° to DORKO  
• Track 132° to KASPI  
• Track 130° to KEEWI
- OVLET:** • From OVLET track 116° to IGMOL  
• Track 115° to KASPI  
• Track 130° to KEEWI

**FOLLOW ARRIVAL INSTRUCTIONS**

**ARRIVAL:**

**KEEWI FOUR**

**RWY 33 X-RAY:**

- Cross** KEEWI AT or ABV 7000ft
- From KEEWI track 157° to LAVUP, then via RNP X RWY 33 (AR)  
MAX IAS 230KT from LAVUP

**COMMUNICATIONS FAILURE: PROCEDURE IN IMC**

**IF ABLE CTC CS ATC ON TEL: (07) 3866 3533**

- Squawk 7600, comply with vertical navigation requirements, but not below MSA.
- Track via the latest STAR clearance to the nominated runway, then fly the most suitable approach in accordance with ERS A EMERG Section 1.5.