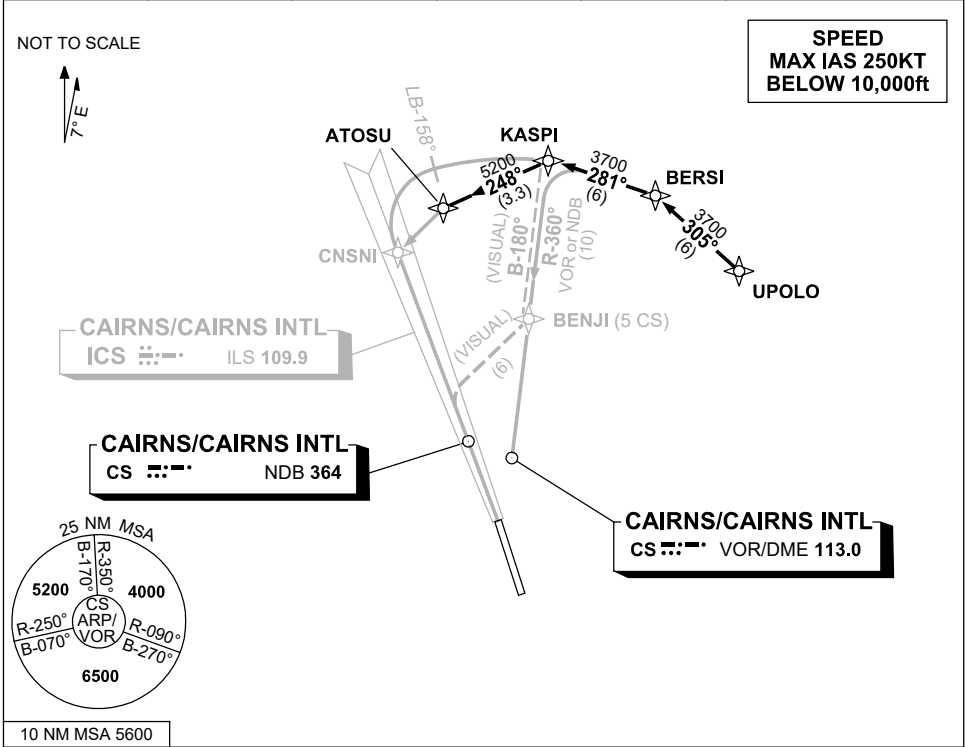


**STANDARD INSTRUMENT ARRIVAL (STAR)
 UPOLO NINE ALPHA, BRAVO, VICTOR, ZULU ARRIVALS (RNAV)
 CAIRNS/CAIRNS INTL, QLD (YBCS)**

30 NOV 2023

ATIS 113.0 131.1	APP 118.4 126.1	TWR 124.9	SMC 121.7		Bearings are Magnetic Elevations in FEET AMSL
---------------------	--------------------	--------------	--------------	--	--



ARRIVAL: **UPOLO NINE**

- From UPOLO, track 305° to BERSI,
- Turn LEFT, track 281° to KASPI.

RWY 15 ALPHA: •From KASPI, track via ILS or LOC RWY 15

RWY 15 BRAVO: •From KASPI, track via NDB-A or VOR-A

RWY 15 VICTOR: •From KASPI, track 180° VISUAL to BENJI thence track via "Creek Corridor" (Cairns NAP refers)

RWY 15 ZULU: •From KASPI, track 248° to ATOSU for RNP Y RWY 15 (LNAV/VNAV ONLY) or RNP Z RWY 15

**COMMUNICATIONS FAILURE: PROCEDURE IN IMC
 IF ABLE CTC CS ATC ON TEL: (07) 3866 3533**

- Squawk 7600, comply with vertical navigation requirements, but not below MSA.
- Track via the latest STAR clearance to the nominated runway, then fly the most suitable approach in accordance with ERSA EMERG Section 1.5.

Changes: WAYPOINT NAMES, VALIDITY NUMBER, Editorial.

BCSSR08-177