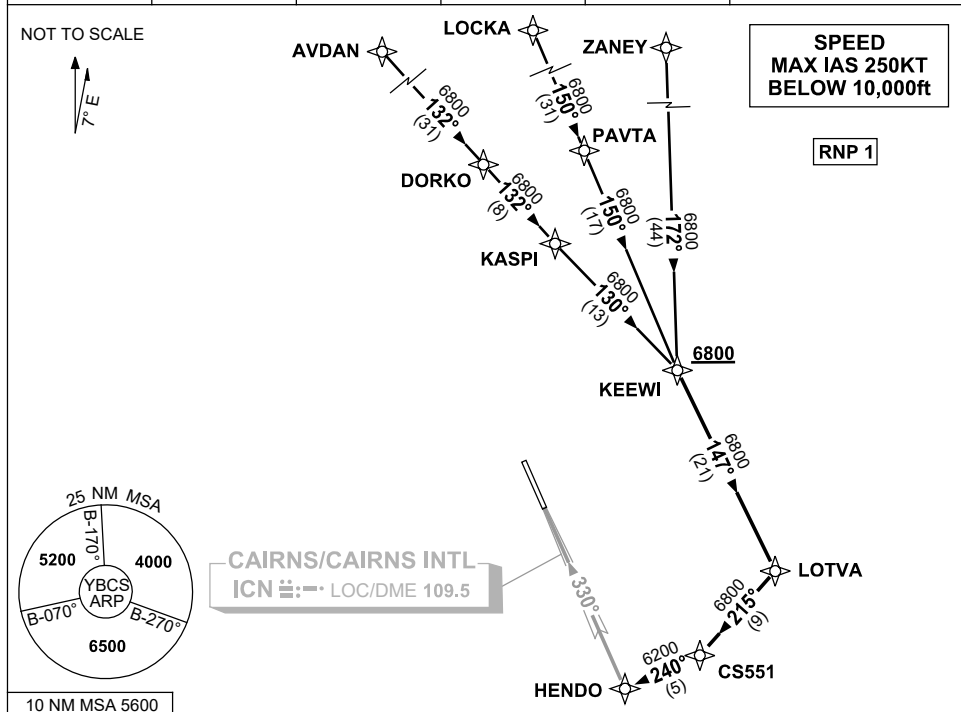


**STANDARD INSTRUMENT ARRIVAL (STAR)
KEEWI FOUR ALPHA ARRIVAL (RNAV)
CAIRNS/CAIRNS INTL, QLD (YBCS)**

20 MAR 2025

| | | | | | |
|---------------------|--------------------|--------------|--------------|--|--------------------------------------------------|
| ATIS 113.0 131.1 | APP 118.4 126.1 | TWR 124.9 | SMC 121.7 | | Bearings are Magnetic Elevations in FEET AMSL |
|---------------------|--------------------|--------------|--------------|--|--------------------------------------------------|



TRANSITIONS:

- ZANEY:** • From ZANEY, track 172° to KEEWI
- LOCKA:** • From LOCKA, track 150° to PAVTA
• Track 150° to KEEWI
- AVDAN:** • From AVDAN, track 132° to DORKO
• Track 132° to KASPI
• Track 130° to KEEWI

FOLLOW ARRIVAL INSTRUCTIONS

ARRIVAL: KEEWI FOUR

- RWY 33 ALPHA:** **Cross** KEEWI AT or ABV 6800ft
- From KEEWI, track 147° to LOTVA
 - Turn RIGHT, track 215° to CS551
 - Turn RIGHT, track 240° to HENDO for LOC RWY 33

COMMUNICATIONS FAILURE: PROCEDURE IN IMC

IF ABLE CTC CS ATC ON TEL: (07) 3866 3533

- Squawk 7600, comply with vertical navigation requirements, but not below MSA.
- Track via the latest STAR clearance to the nominated runway, then fly the most suitable approach in accordance with ERSA EMERG Section 1.5.

Changes: REVISED PROC, MSA, VALIDITY INDICATOR, Editorial.

BCSSR07-182