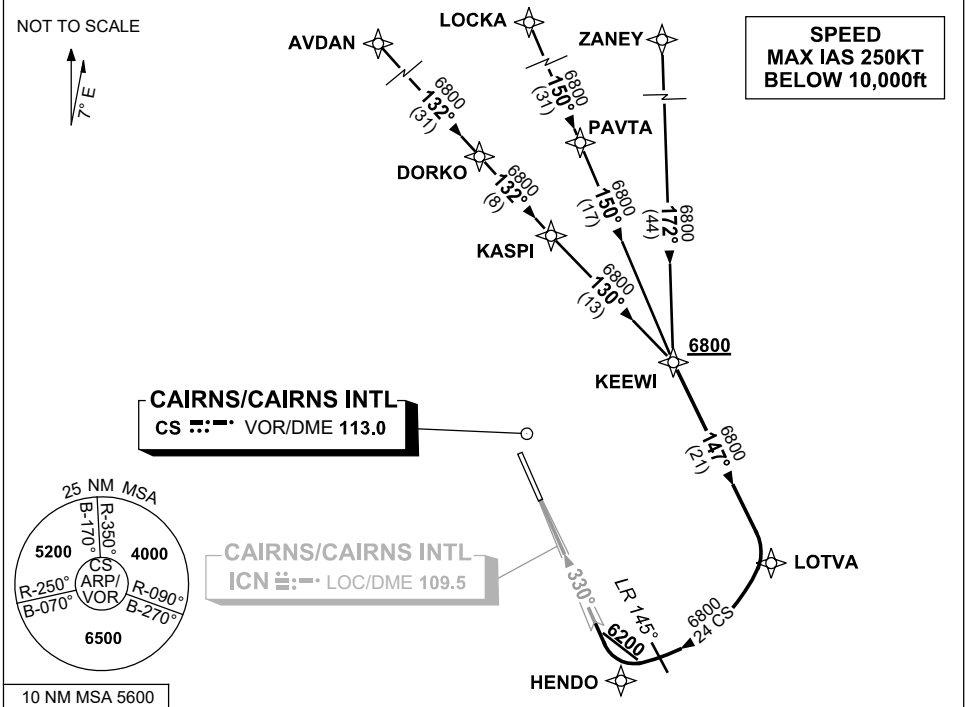


**STANDARD INSTRUMENT ARRIVAL (STAR)
KEEWI THREE ALPHA ARRIVAL (RNAV)
CAIRNS/CAIRNS INTL, QLD (YBCS)**

30 NOV 2023

ATIS 113.0 131.1	APP 118.4 126.1	TWR 124.9	SMC 121.7	Bearings are Magnetic Elevations in FEET AMSL
---------------------	--------------------	--------------	--------------	--



TRANSITIONS:

- ZANEY:** • From ZANEY track 172° to KEEWI
- LOCKA:** • From LOCKA track 150° to PAVTA
• Track 150° to KEEWI
- AVDAN:** • From AVDAN track 132° to DORKO
• Track 132° to KASPI
• Track 130° to KEEWI

FOLLOW ARRIVAL INSTRUCTIONS

- ARRIVAL:** **KEEWI THREE**
- RWY 33 ALPHA:** **Cross** KEEWI AT or ABV 6800ft
From KEEWI track 147° to LOTVA, thence via 24 CS arc for LOC RWY 33

**COMMUNICATIONS FAILURE: PROCEDURE IN IMC
IF ABLE CTC CS ATC ON TEL: (07) 3866 3533**

- Squawk 7600, comply with vertical navigation requirements, but not below MSA.
- Track via the latest STAR clearance to the nominated runway, then fly the most suitable approach in accordance with ERSA EMERG Section 1.5.