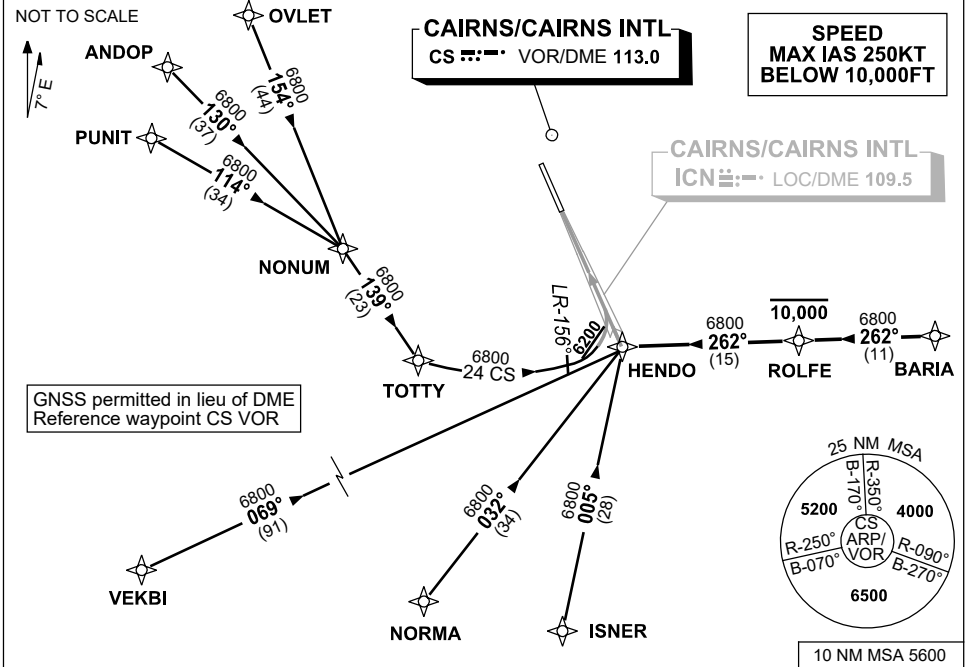


**STANDARD INSTRUMENT ARRIVAL (STAR)
HENDO NINE ALPHA ARRIVAL (RNAV)
CAIRNS/CAIRNS INTL, QLD (YBCS)**

30 NOV 2023

ATIS 113.0 131.1	APP 118.4 126.1	TWR 124.9	SMC 121.7	Bearings are Magnetic Elevations in FEET AMSL
---------------------	--------------------	--------------	--------------	--



TRANSITIONS:

OVLET: From OVLET to HENDO

- Track 154° to NONUM,
- Turn LEFT, track 139° to TOTTY,
- Thence 24 CS arc to HENDO.

ANDOP: From ANDOP to HENDO

- Track 130° to NONUM,
- Turn RIGHT, track 139° to TOTTY,
- Thence 24 CS arc to HENDO.

PUNIT: From PUNIT to HENDO

- Track 114° to NONUM,
- Turn RIGHT, track 139° to TOTTY,
- Thence 24 CS arc to HENDO.

VEKBI: From VEKBI to HENDO

- Track 069° to HENDO.

NORMA: From NORMA to HENDO

- Track 032° to HENDO.

ISNER: From ISNER to HENDO

- Track 005° to HENDO.

BARIA: From BARIA to HENDO

- Track 262° to ROLFE.
- **Cross** ROLFE AT or BLW 10,000ft.
- Track 262° to HENDO.

FOLLOW ARRIVAL INSTRUCTIONS

ARRIVAL: HENDO NINE

RWY 33 ALPHA: From HENDO intercept LOC RWY 33.

**COMMUNICATIONS FAILURE: PROCEDURE IN IMC
IF ABLE CTC CS ATC ON TEL: (07) 3866 3533**

- Squawk 7600, comply with vertical navigation requirements, but not below MSA.
- Track via the latest STAR clearance to the nominated runway, then fly the most suitable approach in accordance with ERSA EMERG Section 1.5.