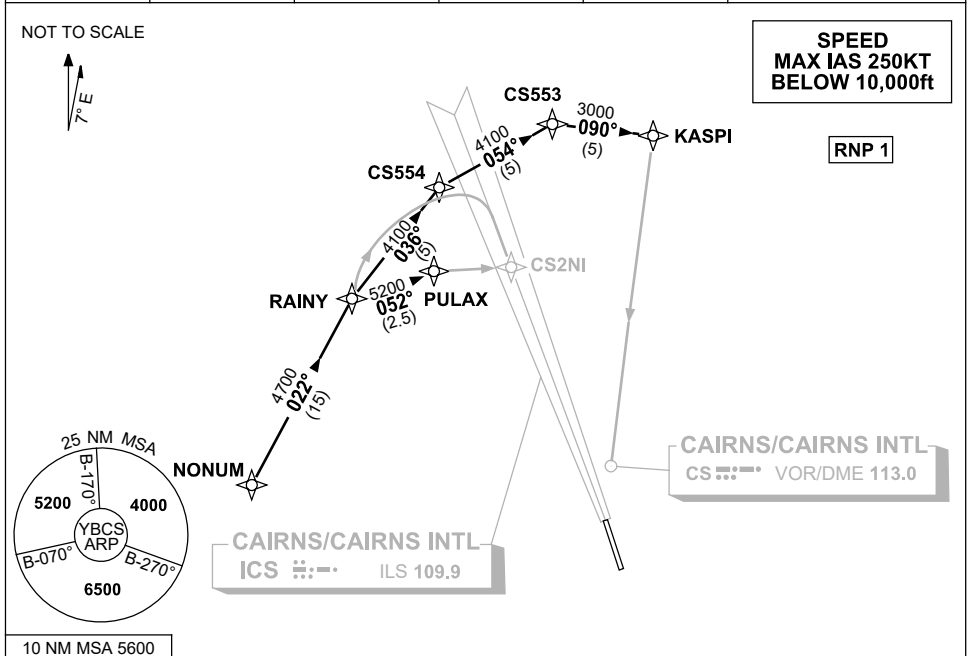


**STANDARD INSTRUMENT ARRIVAL (STAR)
NONUM FIVE ALPHA, BRAVO, ZULU ARRIVALS (RNAV)
CAIRNS/CAIRNS INTL, QLD (YBCS)**

20 MAR 2025

ATIS 113.0 131.1	APP 118.4 126.1	TWR 124.9	SMC 121.7		Bearings are Magnetic Elevations in FEET AMSL
---------------------	--------------------	--------------	--------------	--	--



ARRIVAL: NONUM FIVE ALPHA

- RWY 15:**
- From NONUM, track 022° to RAINY for ILS or LOC RWY 15

ARRIVAL: NONUM FIVE BRAVO

- RWY 15:**
- From NONUM, track 022° to RAINY
 - Turn RIGHT, track 036° to CS554
 - Turn RIGHT, track 054° to CS553
 - Turn RIGHT, track 090° to KASPI for NDB-A or VOR-A.

ARRIVAL: NONUM FIVE ZULU

- RWY 15:**
- From NONUM, track 022° to RAINY
 - Turn RIGHT, track 052° to PULAX for RNP Y RWY 15 (LNAV/VNAV ONLY) or RNP Z RWY 15

**COMMUNICATIONS FAILURE: PROCEDURE IN IMC
IF ABLE CTC CS ATC ON TEL: (07) 3866 3533**

- Squawk 7600, comply with vertical navigation requirements, but not below MSA.
- Track via the latest STAR clearance to the nominated runway, then fly the most suitable approach in accordance with ERSA EMERG Section 1.5.

Changes: REVISED PROC, VALIDITY INDICATOR, MSA, CHART TITLE, Editorial.

BCSSR03-182