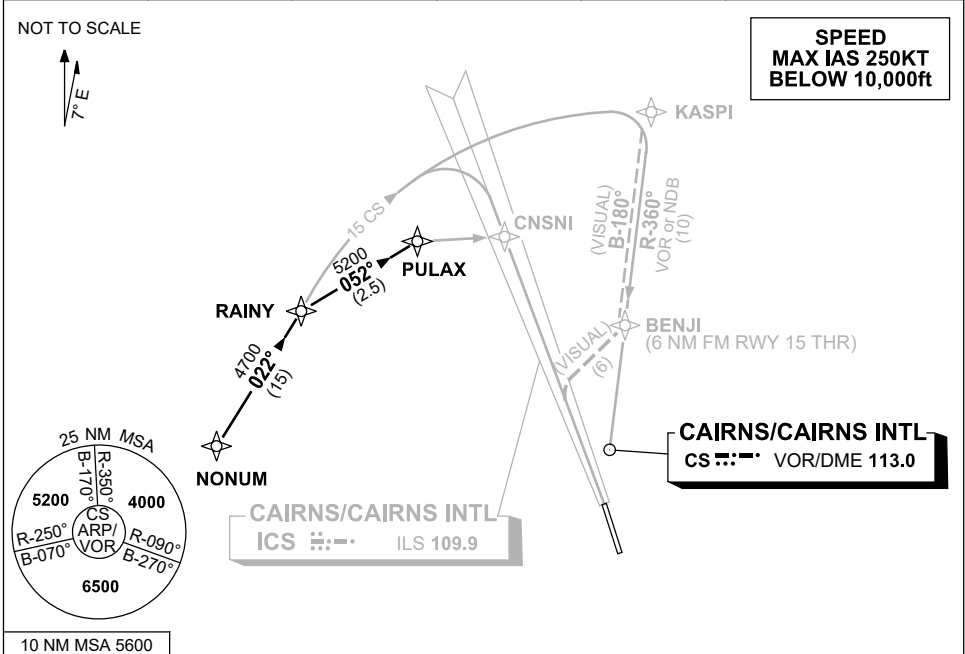


**STANDARD INSTRUMENT ARRIVAL (STAR)
NONUM FOUR ALPHA, BRAVO, VICTOR, ZULU ARRIVALS (RNAV)
CAIRNS/CAIRNS INTL, QLD (YBCS)**

30 NOV 2023

ATIS 113.0 131.1	APP 118.4 126.1	TWR 124.9	SMC 121.7		Bearings are Magnetic Elevations in FEET AMSL
---------------------	--------------------	--------------	--------------	--	--



10 NM MSA 5600	<p>ARRIVAL: NONUM FOUR ALPHA</p> <p>RWY 15: From NONUM track 022° to RAINY From RAINY track via CS 15 DME arc for ILS or LOC RWY 15</p> <p>ARRIVAL: NONUM FOUR BRAVO</p> <p>RWY 15: From NONUM track 022° to RAINY, thence via CS 15 DME arc to KASPI for NDB-A or VOR-A</p> <p>ARRIVAL: NONUM FOUR VICTOR</p> <p>RWY 15: From NONUM track 022° to RAINY, thence via CS 15 DME arc VISUAL to KASPI. From KASPI track 180° VISUAL to BENJI thence VISUAL track via "Creek Corridor" (Cairns NAP refers)</p> <p>ARRIVAL: NONUM FOUR ZULU</p> <p>RWY 15: From NONUM track 022° to RAINY Turn RIGHT, track 052° to PULAX for RNP Y RWY 15 (LNAV/VNAV ONLY) or RNP Z RWY 15</p>
----------------	--

**COMMUNICATIONS FAILURE: PROCEDURE IN IMC
IF ABLE CTC CS ATC ON TEL: (07) 3866 3533**

- Squawk 7600, comply with vertical navigation requirements, but not below MSA.
- Track via the latest STAR clearance to the nominated runway, then fly the most suitable approach in accordance with ERSA EMERG Section 1.5.