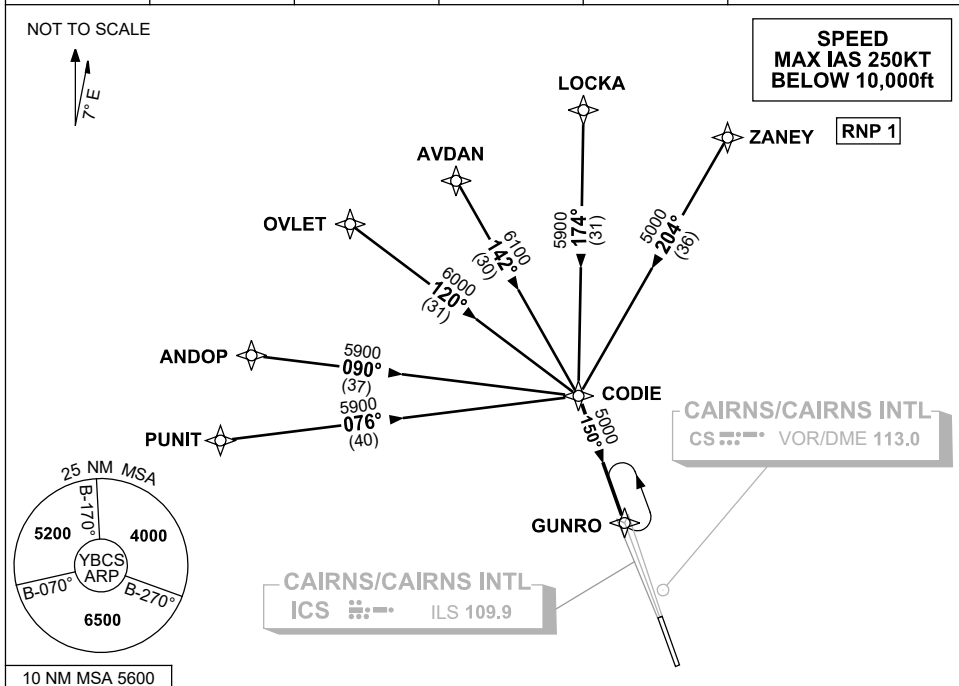


**STANDARD INSTRUMENT ARRIVAL (STAR)
CODIE NINE ALPHA ARRIVAL (RNAV)
CAIRNS/CAIRNS INTL, QLD (YBCS)**

20 MAR 2025

ATIS 113.0 131.1	APP 118.4 126.1	TWR 124.9	SMC 121.7		Bearings are Magnetic Elevations in FEET AMSL
---------------------	--------------------	--------------	--------------	--	--



TRANSITIONS:

- ZANEY:** From ZANEY track 204° to CODIE
LOCKA: From LOCKA track 174° to CODIE
AVDAN: From AVDAN track 142° to CODIE
OVLET: From OVLET track 120° to CODIE
ANDOP: From ANDOP track 090° to CODIE
PUNIT: From PUNIT track 076° to CODIE

FOLLOW ARRIVAL INSTRUCTIONS

ARRIVAL: CODIE NINE

- RWY 15 ALPHA:** • From CODIE track 150° to GUNRO
 • Track via ILS RWY 15 or LOC RWY 15 or RNP X RWY 15 (AR)
 or RNP Y RWY 15 (LNAV/VNAV ONLY) or RNP Z RWY 15

**COMMUNICATIONS FAILURE: PROCEDURE IN IMC
IF ABLE CTC CS ATC ON TEL: (07) 3866 3533**

- Squawk 7600, comply with vertical navigation requirements, but not below MSA.
- Track via the latest STAR clearance to the nominated runway, then fly the most suitable approach in accordance with ERSA EMERG Section 1.5.

Changes: MSA, ALPHA PROC INSTRUCTIONS, VALIDITY INDICATOR, Editorial.

BCSSR01-182