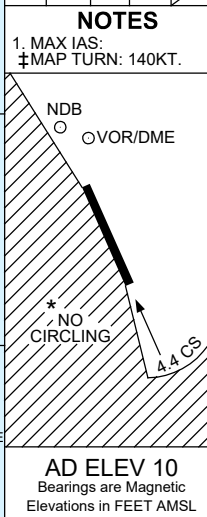
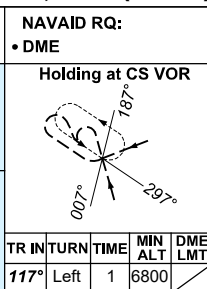
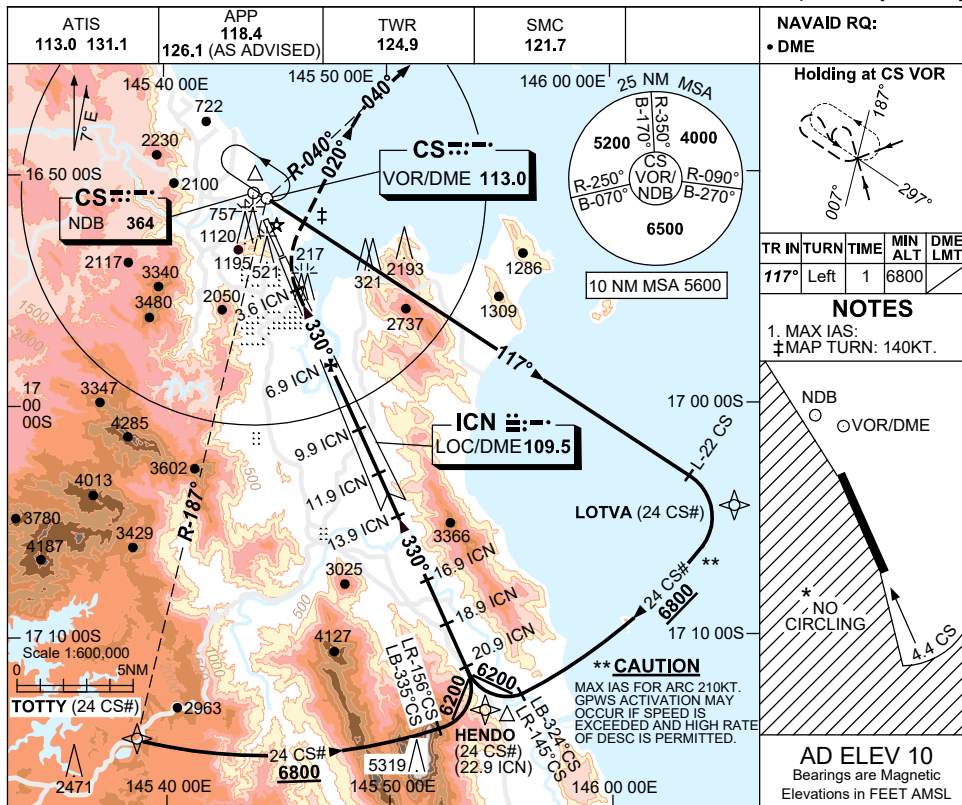


USE QNH

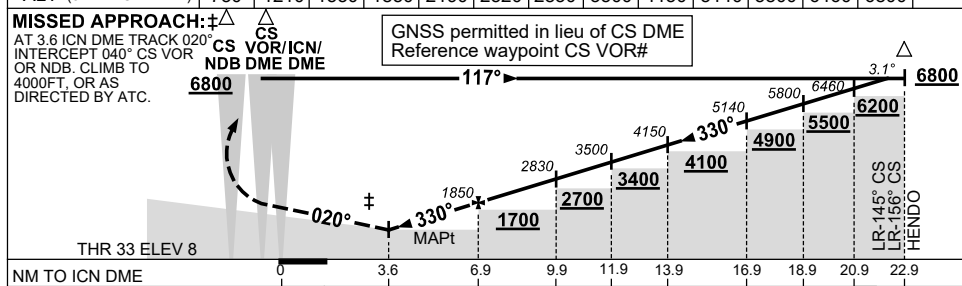
LOC-Y RWY 33

30 NOV 2023

CAIRNS/CAIRNS INTL, QLD (YBCS)



DIST TO ICN DME	3.6	5	6	6.9	8	9	9.9	11.9	13.9	16.9	18.9	20.9	22
ALT (3.1° APCH PATH)	730	1210	1530	1850	2190	2520	2830	3500	4150	5140	5800	6460	6800



CATEGORY	A	B	C	D
S-I LOC	730 (720-4.1)		NOT APPLICABLE	
CIRCLING*	730 (720-2.4)			
ALTERNATE	(1220-4.4)			

NOTES

*2. NO CIRCLING WEST OF RWY 15/33 OR BEYOND 4.4 DME TO THE SOUTH.

3. COLOUR: SEE SPEC NOTICES.

4. USE OF LOC RESTR: W OF RWY CL-WI 30°.

Changes: LOTVA REPLACES BASIL, Editorial. BCSLZ04-177