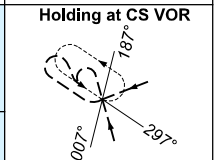
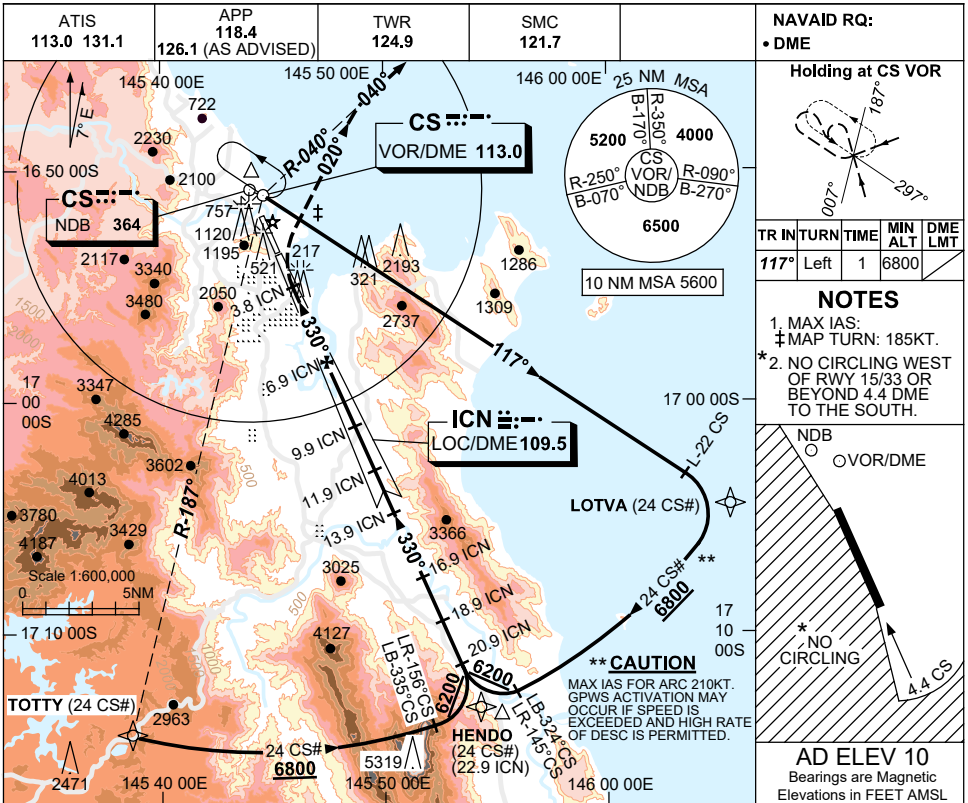


USE QNH

LOC-Z RWY 33

30 NOV 2023

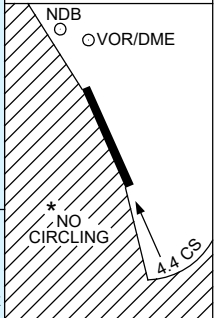
CAIRNS/CAIRNS INTL, QLD (YBCS)



TR IN	TURN	TIME	MIN ALT	DME LMT
117°	Left	1	6800	

**NOTES**

- MAX IAS: ‡MAP TURN: 185KT.
- NO CIRCLING WEST OF RWY 15/33 OR BEYOND 4.4 DME TO THE SOUTH.

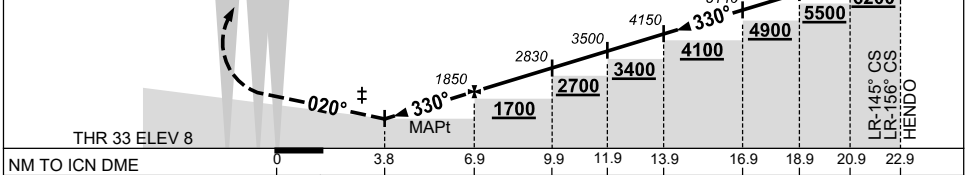


**AD ELEV 10**  
Bearings are Magnetic  
Elevations in FEET AMSL

DIST TO ICN DME	3.8	4.1	5	6	6.9	8	9	9.9	11.9	13.9	16.9	18.9	20.9	22
ALT (3.1° APCH PATH)	800	910	1210	1530	1850	2190	2520	2830	3500	4150	5140	5800	6460	6800

**MISSED APPROACH:** ‡△ CS NDB/VOR/DME ICN/DME  
AT 3.8 ICN DME TRACK 020° CS VOR INTERCEPT 040° CS VOR OR NDB. CLIMB TO 4000FT, OR AS DIRECTED BY ATC.

GNSS permitted in lieu of CS DME  
Reference waypoint CS VOR#



NM TO ICN DME	0	3.8	6.9	9.9	11.9	13.9	16.9	18.9	20.9	22.9
NM TO RWY 33 THR	0	2.2	5.4	10.4						

CATEGORY	A	B	C	D
S-I LOC	NOT APPLICABLE		800 (790-4.5)	
CIRCLING *			800 (790-4.0)	1230 (1220-5.0)
ALTERNATE			(1290-6.0)	(1720-7.0)

**NOTES**

- CLOUR: SEE SPEC NOTICES.
- USE OF LOC RESTR: W OF RWY CL-WI 30'.

Changes: LOTVA REPLACES BASIL, Editorial. BCSLZ03-177