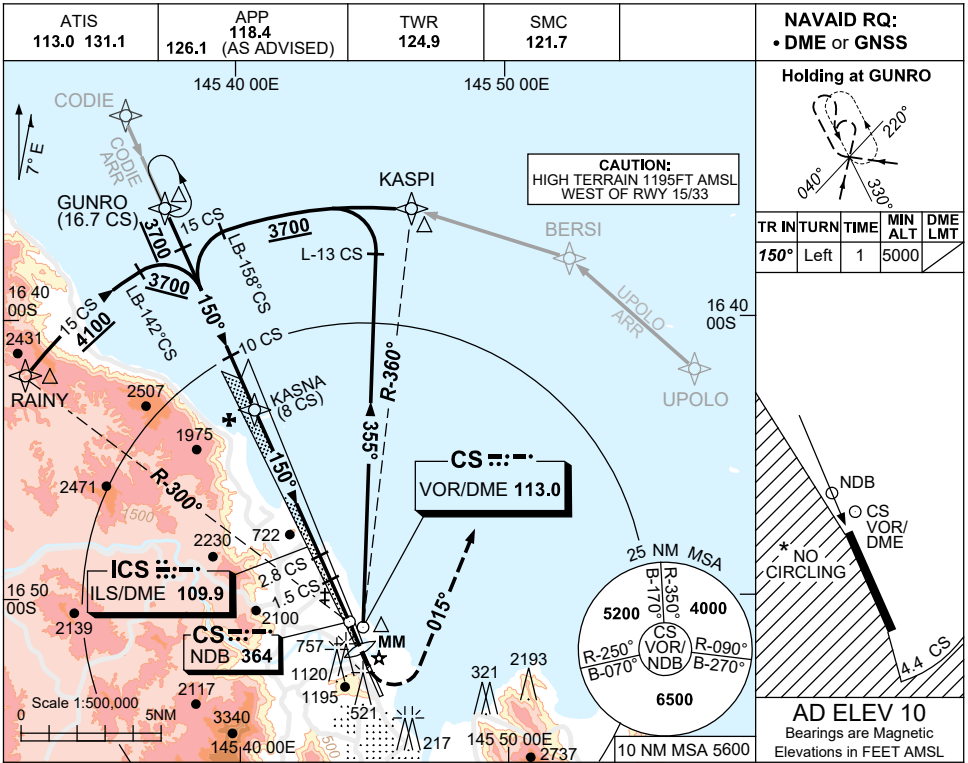


USE QNH

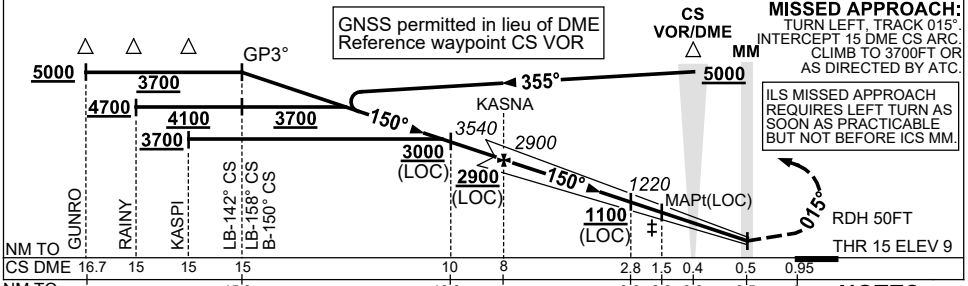
ILS-X or LOC-X RWY 15

30 NOV 2023

CAIRNS/CAIRNS INTL, QLD (YBCS)



NM TO CS DME	14.5	13.6	12	10.5	10	8	7	6	5	4	2.8	2	1.5
ALT (3° APCH PATH)	5000	4700	4180	3700	3540	2900	2580	2260	1930	1610	1220	960	790



NM TO	GUNRO	RAINY	KASPI	LB-142° CS	LB-158° CS	B-150° CS							
CS DME	16.7	15	15	15	10	8	2.8	1.5	0.4	0.5	0.95		
NM TO THR 15	17.5		15.9		10.9	8.8	3.6	2.3	0.8	0.5			

CATEGORY	A	B	C	D
S-I ILS (4.0% MAP)	NOT APPLICABLE		390 (381) 1.2	
S-I ILS (2.5% MAP)			470 (461) 1.7	
S-I LOC			790 (781-3.6)	
CIRCLING*			790 (780-4.0)	1230 (1220-5.0)
ALTERNATE				(1280-6.0)

*1. NO CIRCLING WEST OF RWY 15/33 OR BEYOND 4.4 CS DME TO THE SOUTH.

*2. MAX IAS 180KT FM 1000FT ON FNA TIL TR 015° IN MAP.

3. ACFT MAY BE RADAR VECTORED TO 14 CS DME FINAL AT 3700FT.

4. COLOUR: SEE SPEC NOTICES.

Changes: KASPI REPLACES SUNNY, Editorial.

BCSII02-177