

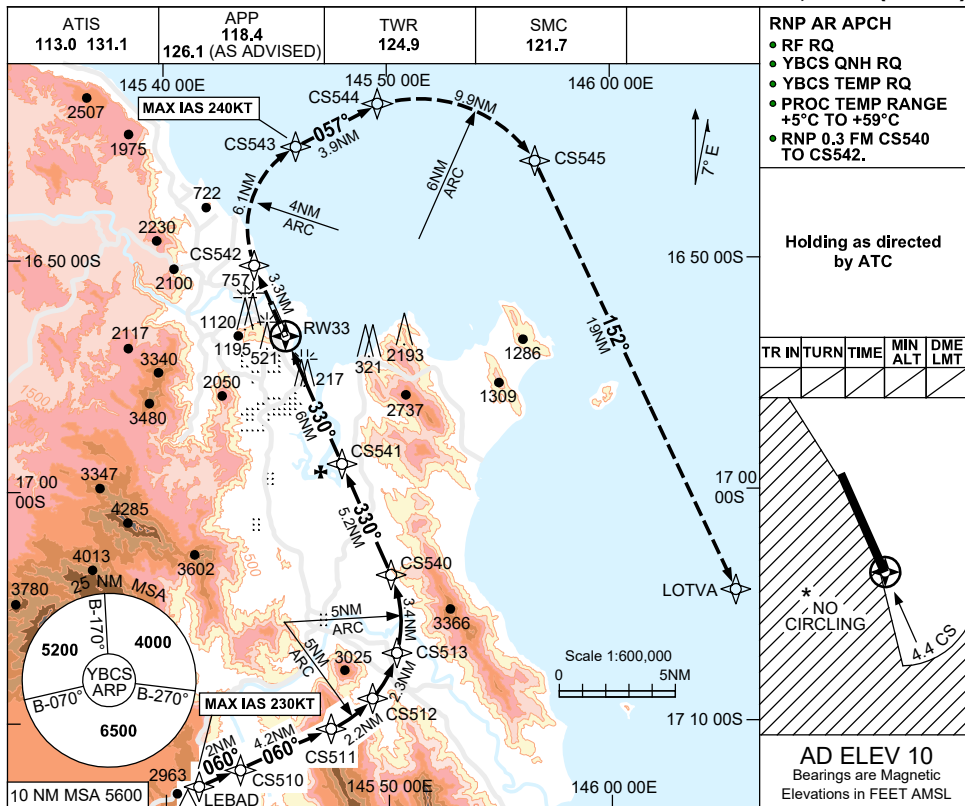
FOR CASA APPROVED OPERATORS ONLY

USE QNH

RNP W RWY 33 (AR)

30 NOV 2023

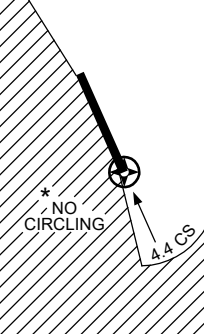
CAIRNS/CAIRNS INTL, QLD (YBCS)



- RNP AR APCH**
- RF RQ
 - YBCS QNH RQ
 - YBCS TEMP RQ
 - PROC TEMP RANGE +5°C TO +59°C
 - RNP 0.3 FM CS540 TO CS542.

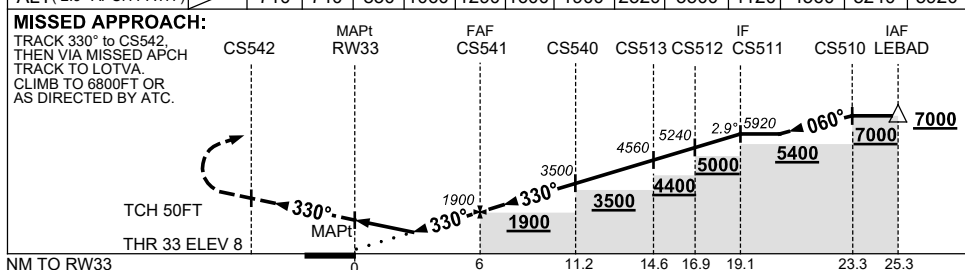
Holding as directed by ATC

TR	IN	TURN	TIME	MIN ALT	DME LMT



AD ELEV 10
Bearings are Magnetic
Elevations in FEET AMSL

NM TO NEXT WPT	RW33	2.1	2.2	2.5	3.3	4	5	CS541	2	CS540	2	CS513	CS512	CS511
ALT (2.9° APCH PATH)	710	740	830	1060	1290	1600	1900	2520	3500	4120	4560	5240	5920	



- NOTES**
1. MAX IAS: INITIAL : 230KTT MAP UNTIL CS543: 240KTT
 2. NO CIRCLING WEST OF RWY 15/33 OR BEYOND 4.4 DME TO THE SOUTH (2NM S OF THR RWY 33).
 3. COLOUR: SEE SPEC NOTICES.

CATEGORY	A	B	C	D
RNP (0.3)(2.5% MAP)		1060 (1050-5.0)		830 (820-4.8)
RNP (0.3)(5.0% MAP)		710 (700-4.1)		740 (730-4.3)
CIRCLING *	NOT AUTHORISED			
ALTERNATE	(1520-4.4)		(1520-6.0)	(1720-7.0)

Changes: LOTVA REPLACES BASIL, Editorial. BCSGN07-177