

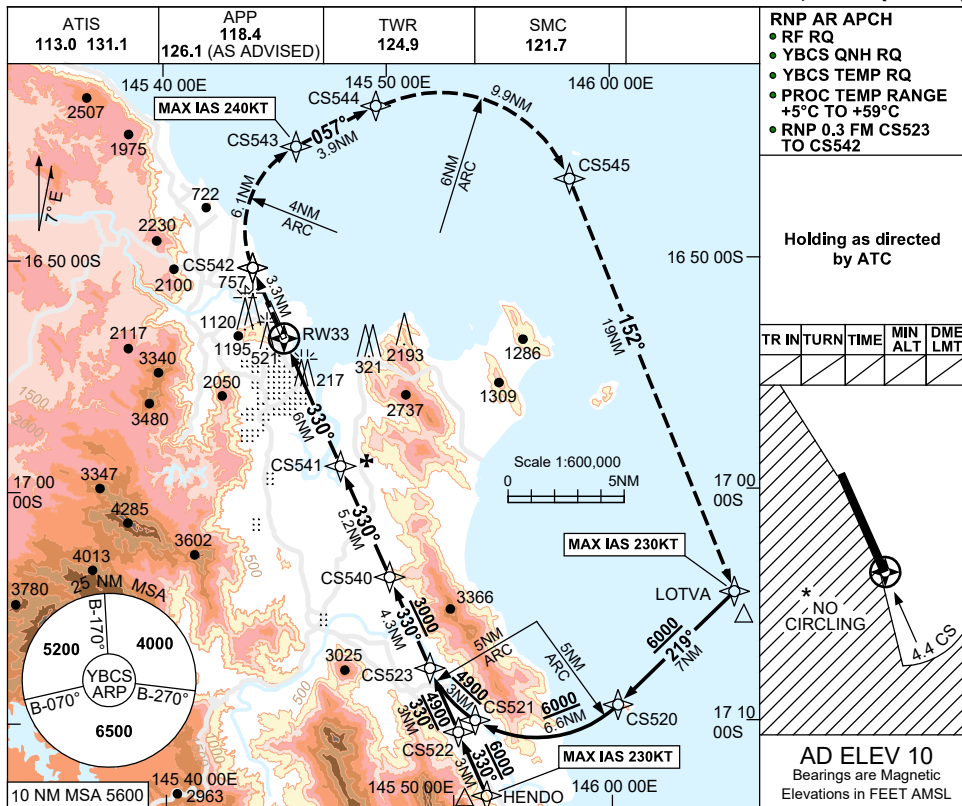
FOR CASA APPROVED OPERATORS ONLY

USE QNH

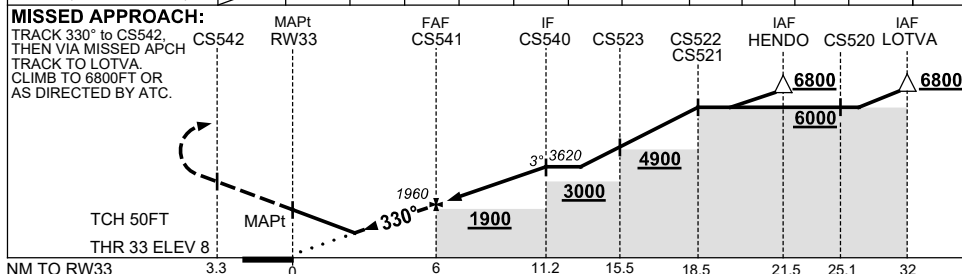
RNP Y RWY 33 (AR)

30 NOV 2023

CAIRNS/CAIRNS INTL, QLD (YBCS)



NM TO NEXT WPT	RW33	2	2.1	2.4	3.1	4	5	CS541	1	2	3	CS540
ALT (3° APCH PATH)	710	740	830	1060	1330	1650	1960	2280	2600	2920	3620	



NOTES

1. MAX IAS:
 INITIAL: 230KT
 MAP UNTIL CS543: 240KT
- * 2. NO CIRCLING WEST OF RWY 15/33 OR BEYOND 4.4 DME TO THE SOUTH (2NM S OF THR RWY 33).
3. COLOUR: SEE SPEC NOTICES.

CATEGORY	A	B	C	D
RNP (0.3) (2.5% MAP)		1060 (1050-5.0)		830 (820-4.8)
RNP (0.3) (5.0% MAP)		710 (700-4.1)		740 (730-4.3)
CIRCLING *	NOT AUTHORISED			
ALTERNATE	(1520-4.4)		(1520-6.0)	(1720-7.0)

Changes: LOTVA REPLACES BASIL, Editorial.

BCSGN05-177