

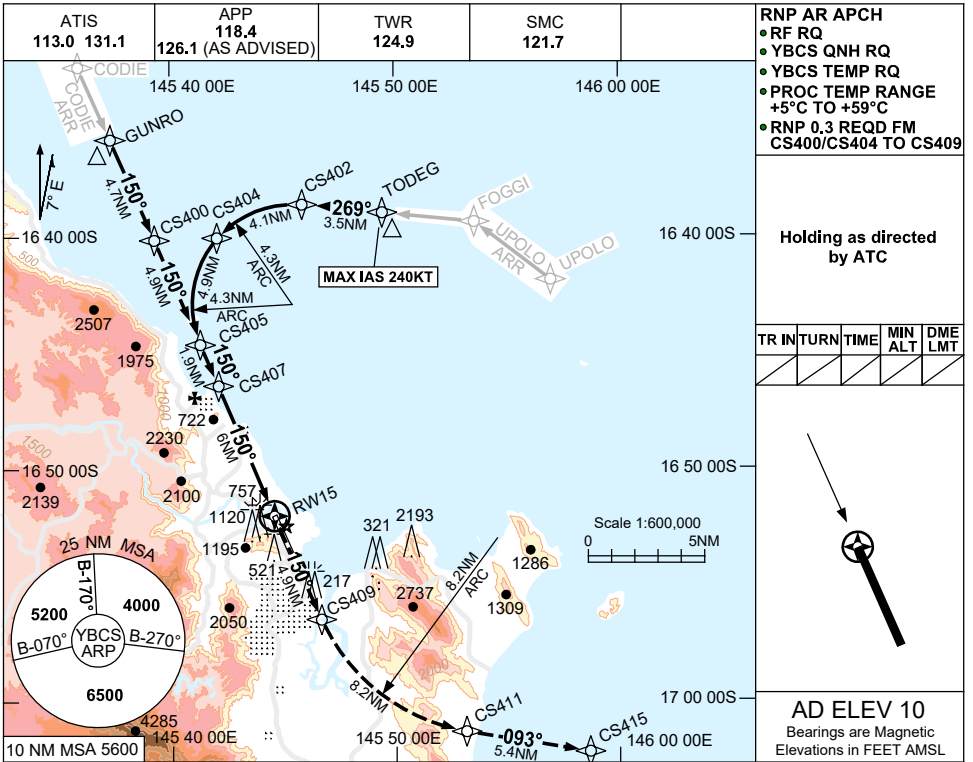
# FOR CASA APPROVED OPERATORS ONLY

USE QNH

RNP X RWY 15 (AR)

24 MAR 2022

CAIRNS/CAIRNS INTL, QLD (YBCS)

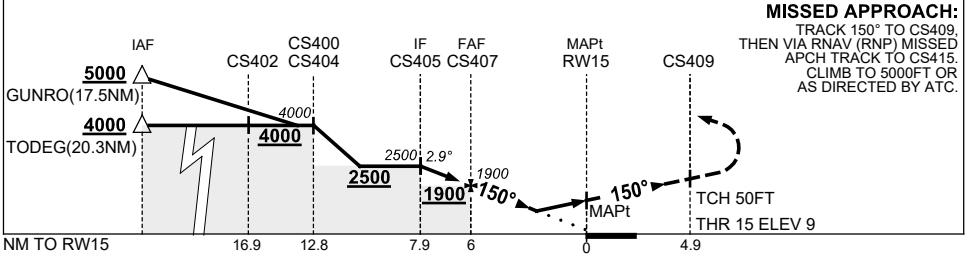


**Holding as directed by ATC**

TR IN	TURN	TIME	MIN ALT	DME LMT

**AD ELEV 10**  
Bearings are Magnetic  
Elevations in FEET AMSL

NM TO NEXT WPT	CS405	1	CS407	5	4	3.3	2.5	2.1	2	RW15			
ALT (2.9° APCH PATH)	2500	2210	1900	1600	1290	1060	840	700	680				



**MISSED APPROACH:**  
TRACK 150° TO CS409,  
THEN VIA RNAV (RNP) MISSED  
APCH TRACK TO CS415.  
CLIMB TO 5000FT OR  
AS DIRECTED BY ATC.

CATEGORY	A	B	C	D
RNP (0.3) (2.5% MAP)		1060 (1051-5.0)		840 (831-3.9)
±RNP (0.3) (5.0% MAP)		680 (671-2.9)		700 (691-3.0)
CIRCLING	NOT AUTHORISED			
ALTERNATE	(1520-4.4)		(1520-6.0)	(1720-7.0)

- NOTES**
- MAX IAS:  
TODERG : 240KT.
  - MIN MAP GRAD 5% TO 1400FT THEN 2.5%.
  - COLOUR: SEE SPEC NOTICES.

Changes: CHART TITLE, PBN SPECIFICATION BOX, Editorial. BCSGN04-170