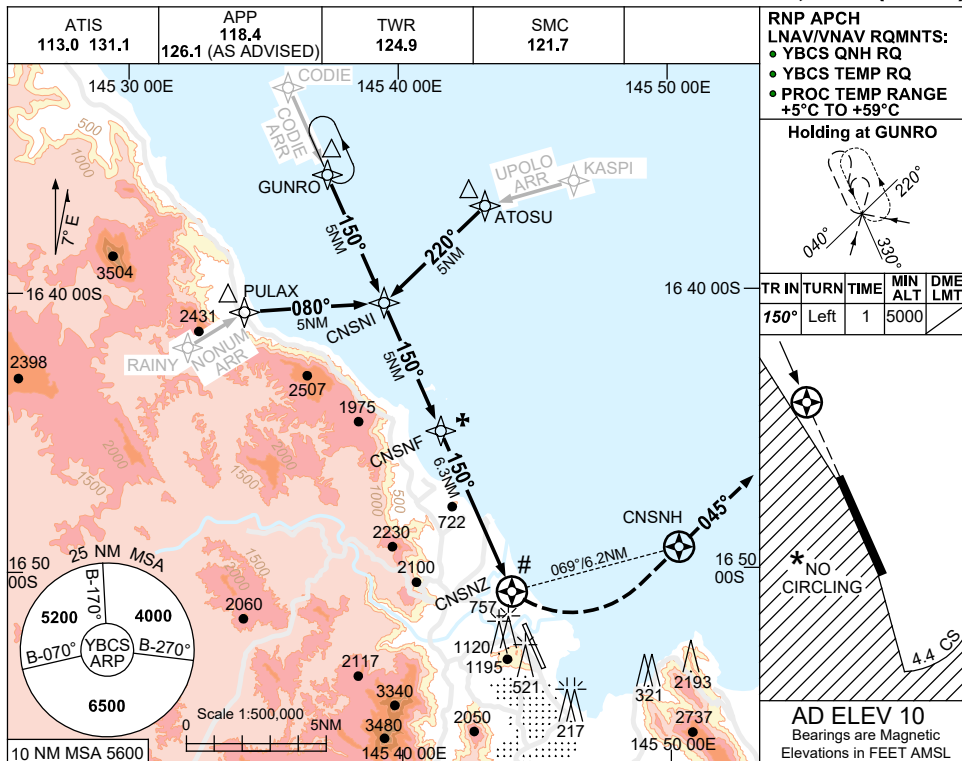
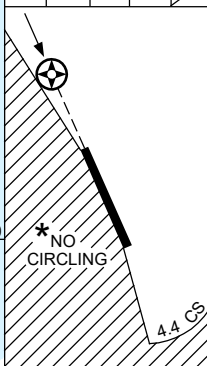


**USE QNH** RNP Y RWY 15 (LNAV/VNAV ONLY)  
**CAIRNS/CAIRNS INTL, QLD (YBCS)**

30 NOV 2023

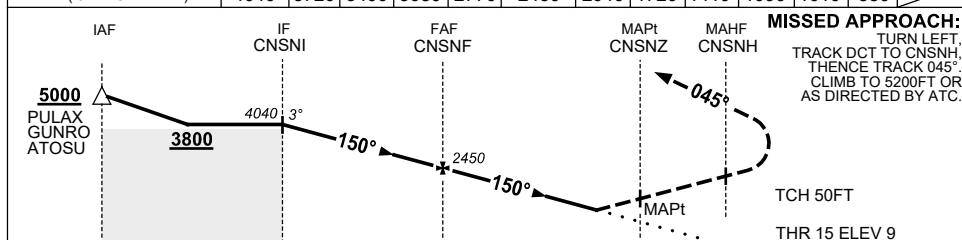


TR IN	TURN	TIME	MIN ALT	DME LMT
150°	Left	1	5000	



**AD ELEV 10**  
 Bearings are Magnetic  
 Elevations in FEET AMSL

NM TO NEXT WPT	CNSNI	4	3	2	1	CNSNF	5	4	3	2	1.8	1.3	CNSNZ
ALT (3° APCH PATH)	4040	3720	3400	3080	2770	2450	2040	1720	1410	1090	1010	880	



**MISSED APPROACH:**  
 TURN LEFT  
 TRACK DCT TO CNSNH,  
 THENCE TRACK 045°.  
 CLIMB TO 5200FT OR  
 AS DIRECTED BY ATC.

TCH 50FT  
 THR 15 ELEV 9

NM TO CNSNZ: 16.3, 11.3, 6.3, 0, 1.2

- NOTES**
- # 1. MAX IAS: : 210KT.  
 INITIAL : 190KT.  
 MAP TURN: 190KT.  
 HOLDING : 230KT.
  - \* 2. NO CIRCLING WEST OF RWY 15/33 OR BEYOND 4.4 DME TO THE SOUTH (2NM S OF THR RWY 33).
  - ‡ 3. WITHOUT ILS, LOC & DME.
  - 4. COLOUR: SEE SPEC NOTICES.

CATEGORY	A	B	C	D
LNAV/VNAV(2.5% MAP)		1010 (1001-4.8)		
LNAV/VNAV(4.0% MAP)		880 (871-4.1)		
CIRCLING *	1030 (1020-2.4)	1030(1020-4.0)		1230(1220-5.0)
ALTERNATE ‡	(1520-4.4)		(1520-6.0)	(1720-7.0)

Changes: KASPI REPLACES SUNNY, Editorial.

BCSGN03-177