

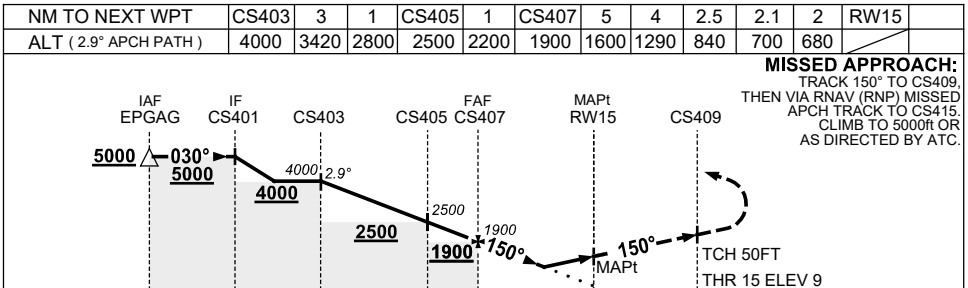
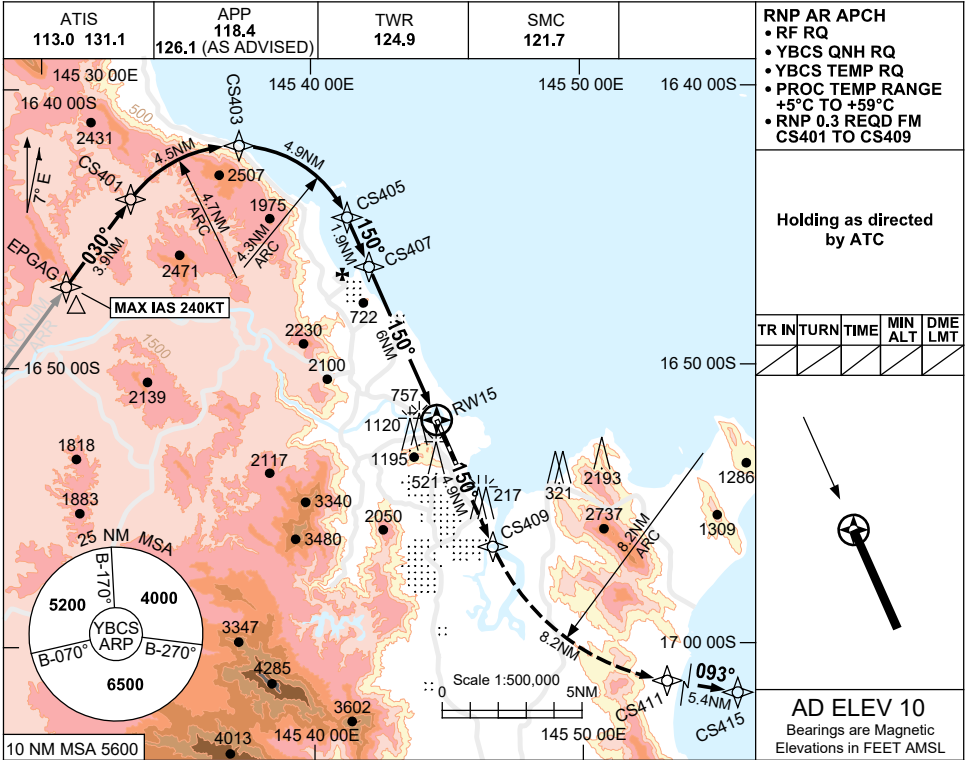
FOR CASA APPROVED OPERATORS ONLY

USE QNH

RNP W RWY 15 (AR)

20 MAR 2025

CAIRNS/CAIRNS INTL, QLD (YBCS)



NM TO RW15: 21.2, 17.3, 12.8, 7.9, 6, 0, 4.9

NOTES

1. MAX IAS:
INITIAL : 240KT.
2. MIN MAP GRAD 5%
TO 1000ft THEN 2.5%.
3. COLOUR: SEE
SPEC NOTICES.

CATEGORY	A	B	C	D
RNP (0.3) (2.5% MAP)		830 (821-3.9)		840 (831-4.0)
‡ RNP (0.3) (5.0% MAP)		680 (671-3.0)		700 (691-3.2)
CIRCLING	NOT AUTHORISED			
ALTERNATE	(1520-4.4)		(1520-6.0)	(1720-7.0)

Changes: MINIMA, NOTES.

BCSGN02-182