

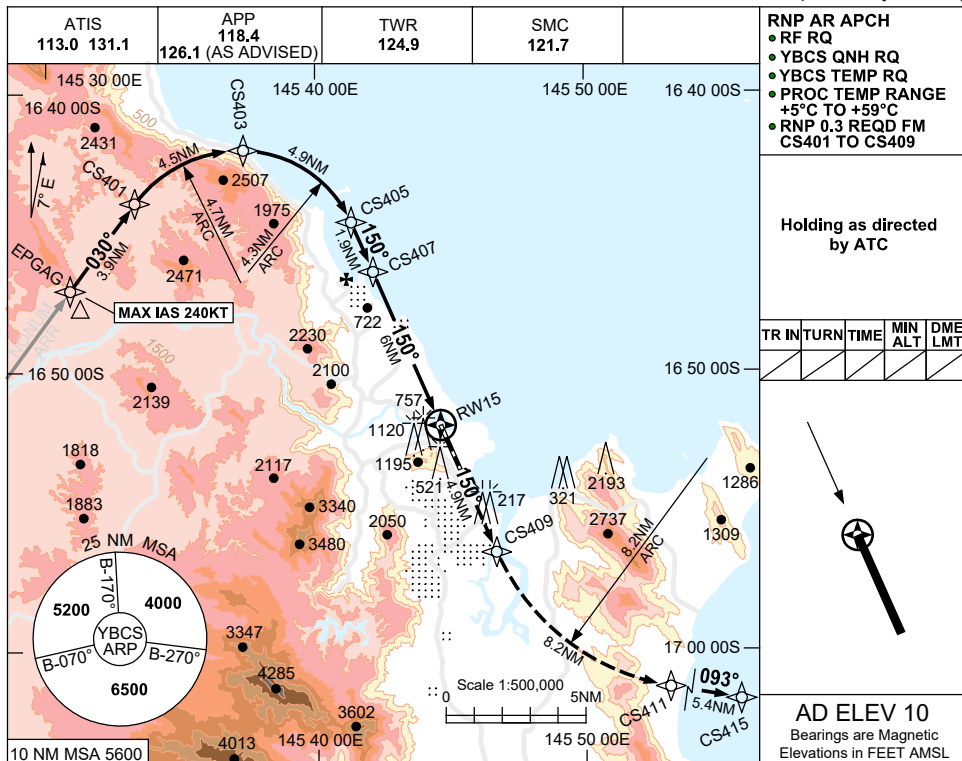
FOR CASA APPROVED OPERATORS ONLY

USE QNH

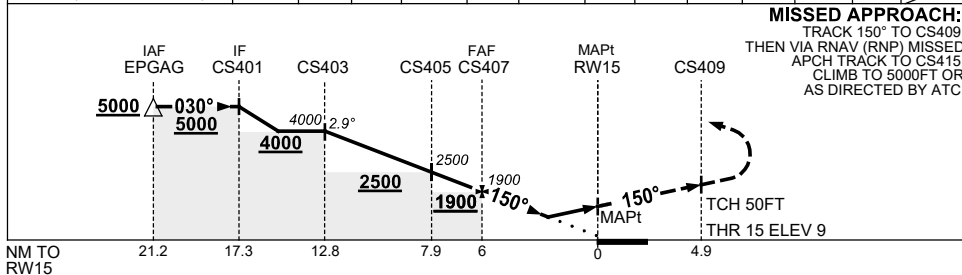
RNP W RWY 15 (AR)

24 MAR 2022

CAIRNS/CAIRNS INTL, QLD (YBCS)



NM TO NEXT WPT	CS403	3	1	CS405	1	CS407	5	4	3.3	2.5	2.1	2	RW15
ALT (2.9° APCH PATH)	4000	3420	2800	2500	2200	1900	1600	1290	1060	840	700	680	



NOTES

1. MAX IAS:
INITIAL : 240KT.
2. MIN MAP GRAD 5%
TO 1400FT THEN 2.5%.
3. COLOUR: SEE
SPEC NOTICES.

CATEGORY	A	B	C	D
RNP (0.3) (2.5% MAP)		1060 (1051-5.0)		840 (831-3.9)
‡ RNP (0.3) (5.0% MAP)		680 (671-2.9)		700 (691-3.0)
CIRCLING	NOT AUTHORISED			
ALTERNATE	(1520-4.4)	(1520-6.0)	(1720-7.0)	

Changes: CHART TITLE, PBN SPECIFICATION BOX, Editorial.

BCSGN02-170