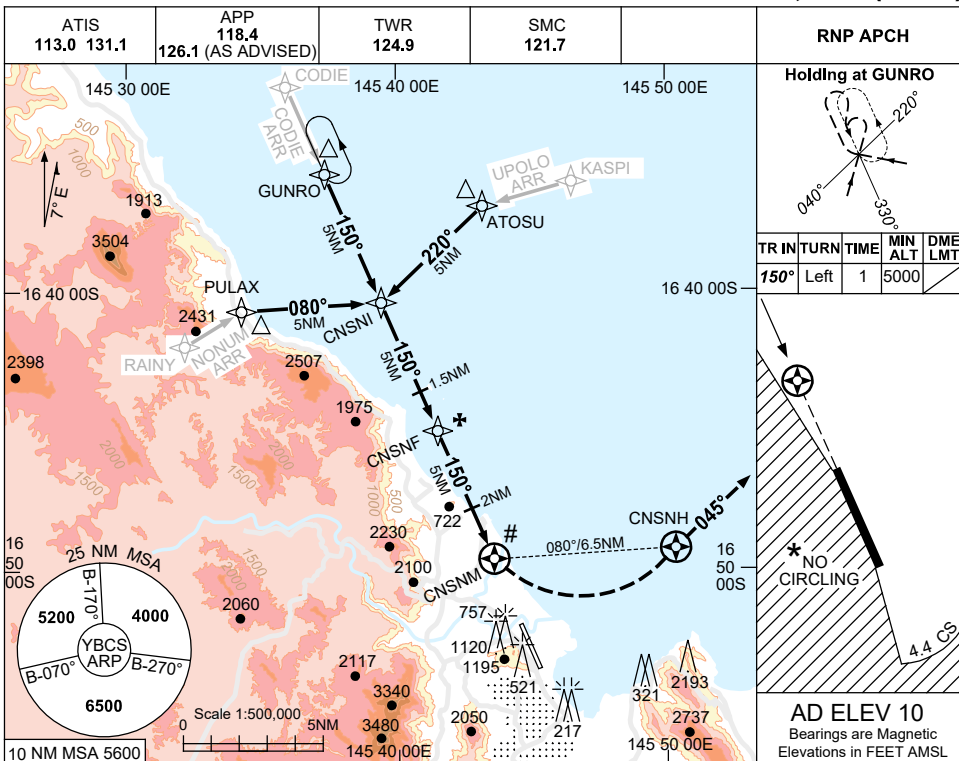


USE QNH

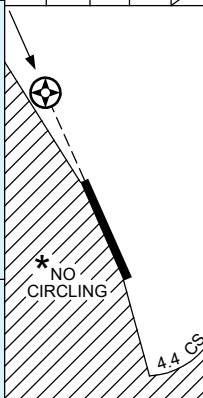
RNP Z RWY 15

30 NOV 2023

CAIRNS/CAIRNS INTL, QLD (YBCS)

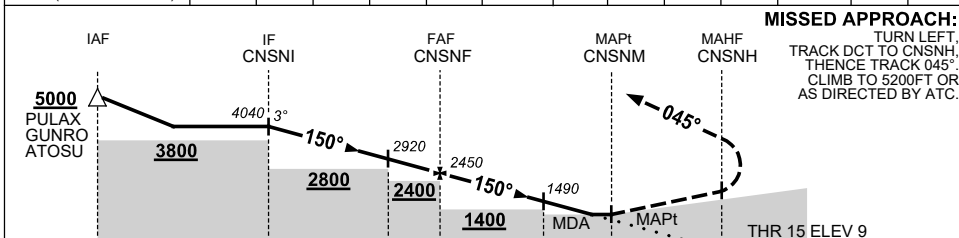


TR IN	TURN	TIME	MIN ALT	DME LMT
150°	Left	1	5000	



AD ELEV 10
Bearings are Magnetic
Elevations in FEET AMSL

NM TO NEXT WPT	CNSNI	4	3	2	1	CNSNF	4	3	2	0.5	CNSNM		
ALT (3° APCH PATH)	4040	3720	3400	3080	2770	2450	2130	1810	1490	1030	860		



MISSED APPROACH:
TURN LEFT,
TRACK DCT TO CNSNH,
THENCE TRACK 045°.
CLIMB TO 5200FT OR
AS DIRECTED BY ATC.

NOTES

- # 1. MAX IAS: INITIAL : 210KT. MAP TURN: 190KT. HOLDING : 230KT.
- * 2. NO CIRCLING WEST OF RWY 15/33 OR BEYOND 4.4 DME TO THE SOUTH (2NM S OF THR RWY 33).
- ‡ 3. WITHOUT ILS, LOC & DME.
- 4. COLOUR: SEE SPEC NOTICES.

CATEGORY	A	B	C	D
LNAV (2.5% MAP)		1030 (1020-5.0)		
LNAV (4.0% MAP)		860 (850-4.0)		
CIRCLING *	1030 (1020-2.4)		1030(1020-4.0) 1230(1220-5.0)	
ALTERNATE ‡	(1520-4.4)		(1520-6.0) (1720-7.0)	

Changes: KASPI REPLACES SUNNY.

BCSGN01-177