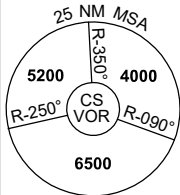


STANDARD INSTRUMENT DEPARTURES (SID)  
RWY 33 EAZEE THREE (JET)  
CAIRNS/CAIRNS INTL, QLD (YBCS)

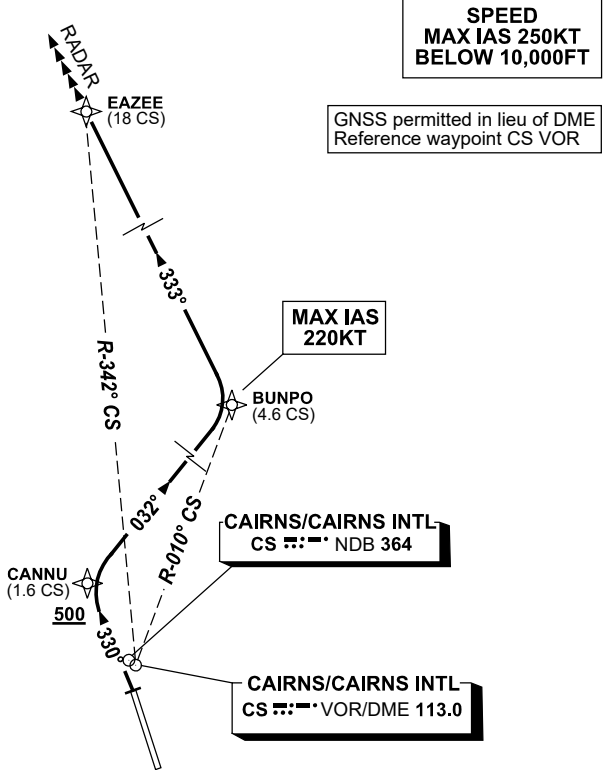
30 NOV 2023

ATIS 113.0 131.1	ACD 128.75	SMC 121.7	TWR 124.9	DEP 118.4	DEP 126.1 (AS ADVISED)	Bearings are Magnetic Elevations in FEET AMSL
---------------------	---------------	--------------	--------------	--------------	---------------------------	--

NOT TO SCALE



10 NM MSA 5600



**SPEED  
MAX IAS 250KT  
BELOW 10,000FT**

GNSS permitted in lieu of DME  
Reference waypoint CS VOR

**MAX IAS  
220KT**

**CAIRNS/CAIRNS INTL  
CS :--: NDB 364**

**CAIRNS/CAIRNS INTL  
CS :--: VOR/DME 113.0**

**RWY 33 EAZEE THREE**

- GRAD 4.6% TO 2000ft THENCE 3.3%  
MAX IAS 220KT until BUNPO
- Track 330° to CANNU  
**Cross** CANNU AT or ABV 500ft
- Turn RIGHT track 032° to BUNPO
- Turn LEFT, track 333° to EAZEE
- When directed Contact Departures

**TRANSITION**

RADAR: • From EAZEE expect radar vectors  
to cleared route

Changes: BUNPO REPLACES HAKIT, Editorial.