

**STANDARD INSTRUMENT DEPARTURE (SID)
RWY 15 NONUM ONE (NON-JET)
CAIRNS/CAIRNS INTL, QLD (YBCS)**

2 DEC 2021

ATIS 113.0 131.1	ACD 128.75	SMC 121.7	TWR 124.9	DEP 118.4	DEP 126.1 (AS ADVISED)	Bearings are Magnetic Elevations in FEET AMSL
---------------------	---------------	--------------	--------------	--------------	---------------------------	--

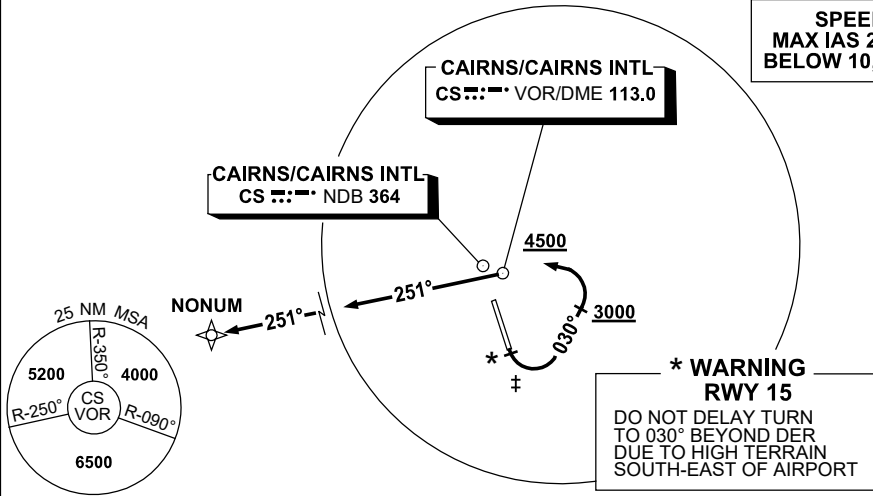
NOT TO SCALE



GNSS permitted in lieu of DME
Reference waypoint CS VOR

‡ **SPEED AND BANK ANGLE**
THE FOLLOWING LIMITS ARE
RQ UNTIL TRACKING 030°
1. MAX IAS 190KT
2. MIN 25° BANK

SPEED
MAX IAS 250KT
BELOW 10,000FT



*** WARNING**
RWY 15
DO NOT DELAY TURN
TO 030° BEYOND DER
DUE TO HIGH TERRAIN
SOUTH-EAST OF AIRPORT

10 NM MSA 5600

NONUM ONE DEPARTURE

- GRAD 4% to 600ft thence 3.3%
 - Track 150°
 - * At the earlier of 400ft or DER (2.6 CS DME) turn LEFT track 030°
 - AT or ABV 3000ft turn LEFT
 - Track to CS VOR/NDB
- Requirement: reach 4500ft by CS VOR/NDB
- Track 251° to NONUM