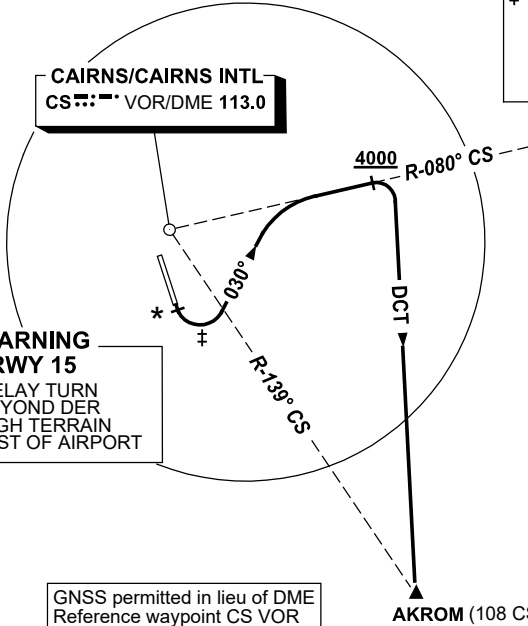


STANDARD INSTRUMENT DEPARTURE (SID)
RWY 15 AKROM ONE (JET)
CAIRNS/CAIRNS INTL, QLD (YBCS)

30 NOV 2023

ATIS 113.0 131.1	ACD 128.75	SMC 121.7	TWR 124.9	DEP 118.4	DEP 126.1 (AS ADVISED)	Bearings are Magnetic Elevations in FEET AMSL
---------------------	---------------	--------------	--------------	--------------	---------------------------	--

NOT TO SCALE

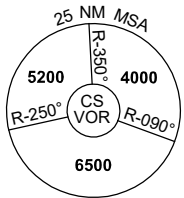


‡ **SPEED AND BANK ANGLE**
THE FOLLOWING LIMITS ARE
RQ UNTIL TRACKING 030°
1. MAX IAS 190KT
2. MIN 25° BANK

SPEED
MAX IAS 250KT
BELOW 10,000FT

*** WARNING
RWY 15**
DO NOT DELAY TURN
TO 030° BEYOND DER
DUE TO HIGH TERRAIN
SOUTH-EAST OF AIRPORT

GNSS permitted in lieu of DME
Reference waypoint CS VOR



10 NM MSA 5600

AKROM ONE DEPARTURE

- GRAD 4% to 600ft thence 3.3%.
- Track 150°
- * At the earlier of 400ft or DER (2.6 CS DME) turn LEFT track 030°
- Intercept CS R-080°
- When established on CS R-080° and AT or ABV 4000ft turn RIGHT
- Track DCT to AKROM and thence as cleared

Changes: AKROM REPLACES SWIFT, Editorial.

BCSDP03-177