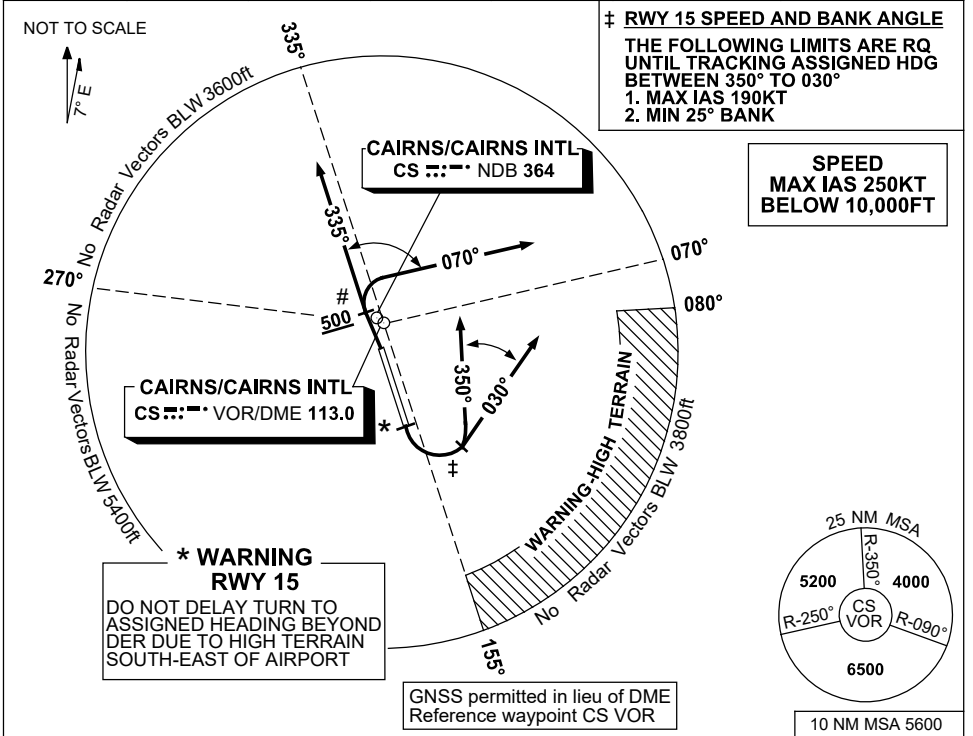


**STANDARD INSTRUMENT DEPARTURES (SID)  
CAIRNS TWO DEPARTURE (RADAR)  
CAIRNS/CAIRNS INTL, QLD (YBCS)**

**2 DEC 2021**

ATIS 113.0 131.1	ACD 128.75	SMC 121.7	TWR 124.9	DEP 118.4	DEP 126.1 (AS ADVISED)	Bearings are Magnetic Elevations in FEET AMSL
---------------------	---------------	--------------	--------------	--------------	---------------------------	--



- CAIRNS TWO DEPARTURE (RADAR)**
- |   |  |
|---|--|
| <p><b>RWY 15</b></p> <ul style="list-style-type: none"> <li>• GRAD 4% to 600ft thence 3.3%</li> <li>• Track 150°</li> <li>* At the earlier of 400ft or DER (2.6 DME) turn LEFT to assigned heading (between 350° to 030°)</li> <li>• When directed, contact departures for radar vectors</li> </ul> | <p><b>RWY 33</b></p> <ul style="list-style-type: none"> <li># • MAX IAS 220KT</li> <li>• GRAD 4.6% TO 2000ft THENCE 3.3%</li> <li>• Track 330°</li> <li>• AT or ABV 500ft, but not before DER, turn to assigned heading (between 335° to 070°)</li> <li>• When directed, contact departures for radar vectors</li> </ul> |
|---|--|

**COMMUNICATIONS FAILURE PROCEDURE**

On recognition of communications failure

- Squawk 7600
- Maintain last assigned vector for two minutes and, if necessary, climb to minimum safe altitude to maintain terrain clearance, then
- Proceed in accordance with the latest ATC route clearance acknowledged

Changes: Editorial.

BCSDP02-169