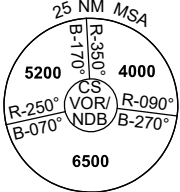


DME or GNSS ARRIVAL PROCEDURES CAIRNS/CAIRNS INTL, QLD (YBCS) Page 2

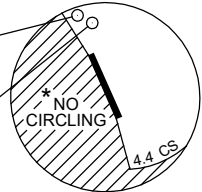
2 DEC 2021

ATIS 113.0 131.1	APP 118.4 126.1 (AS ADVISED)	TWR 124.9	SMC 121.7		Bearings are Magnetic Elevations in FEET AMSL
---------------------	------------------------------------	--------------	--------------	--	--



**DME USING CS DME
REFERENCE WAYPOINT CS VOR**

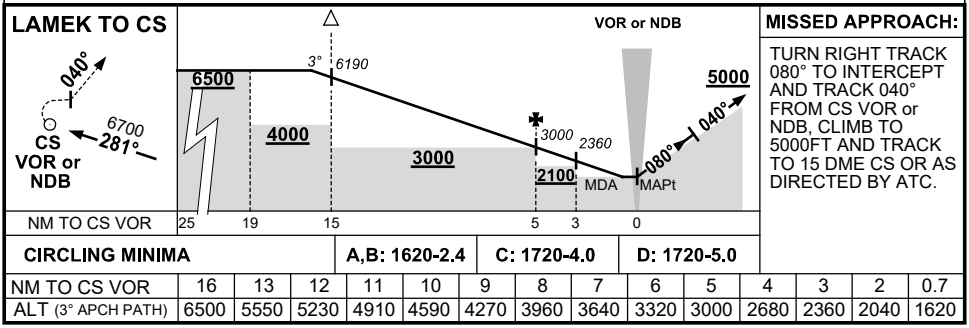
CS NDB 364
CS VOR/DME 113.0



* 1. NO CIRCLING WEST OF RWY 15/33 OR BEYOND 4.4 DME TO THE SOUTH.

10 NM MSA 5600

AD ELEV 10



LIMITATION : 185KT IAS MAX UNTIL ESTABLISHED ON R-040° CS VOR OR NDB.

CAUTION : DO NOT DELAY TURN ONTO 080° DUE TO HIGH TERRAIN WEST OF MISSED APPROACH AREA.