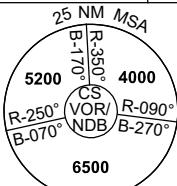


DME or GNSS ARRIVAL PROCEDURES CAIRNS/CAIRNS INTL, QLD (YBCS) Page 1

2 DEC 2021

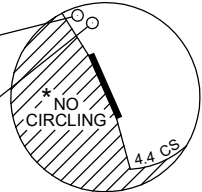
ATIS 113.0 131.1	APP 118.4 (AS ADVISED)	TWR 124.9	SMC 121.7		Bearings are Magnetic Elevations in FEET AMSL
---------------------	------------------------------	--------------	--------------	--	--



DME USING CS DME REFERENCE WAYPOINT CS VOR

CS ---
NDB 364

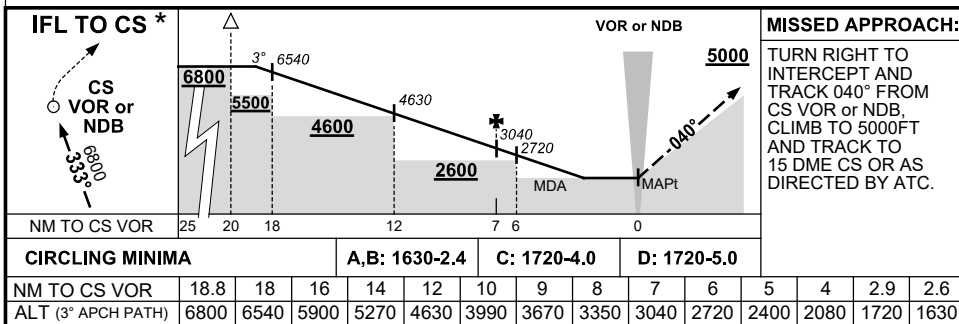
CS ---
VOR/DME 113.0



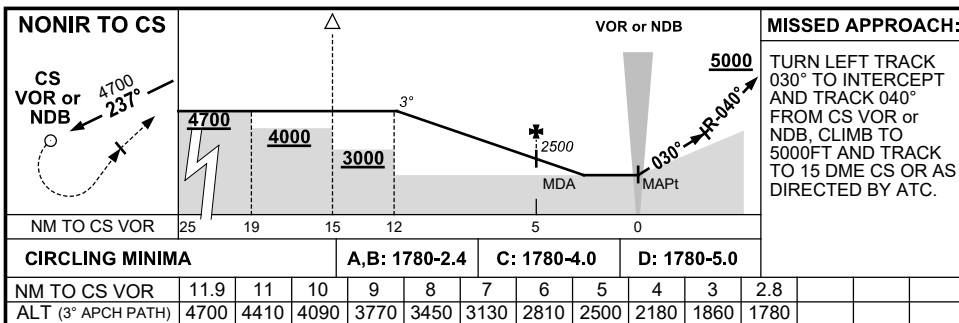
* 1. NO CIRCLING WEST OF RWY 15/33 OR BEYOND 4.4 DME TO THE SOUTH.

10 NM MSA 5600

AD ELEV 10



* NOTE : STRAIGHT-IN LDG RWY 33 NOT AVAILABLE UNLESS VISUAL BY 10 DME - DESC GRADIENT TO THR 345FT/NM.



LIMITATION : 185KT IAS MAX UNTIL ESTABLISHED ON R-040° CS VOR OR NDB.

CAUTION : DO NOT DELAY TURN ONTO 030° DUE TO HIGH TERRAIN WEST OF MISSED APPROACH AREA.