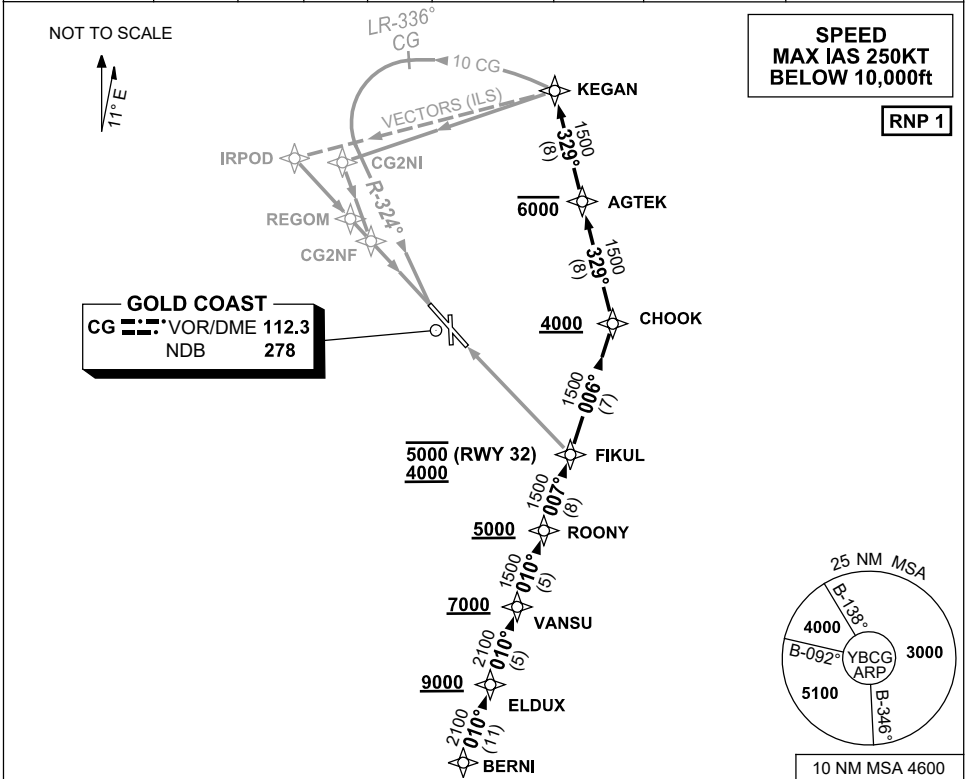


**STANDARD ARRIVAL ROUTE (STAR)  
BERNI THREE ALPHA ARRIVAL (RNAV)  
GOLD COAST, QLD (YBCG)**

21 MAR 2024

|                                    |                 |              |              |               |                          |                    |  |  |
|------------------------------------|-----------------|--------------|--------------|---------------|--------------------------|--------------------|--|--|
| ATIS<br>112.3 (H24) 134.5 (TWR HR) | APP<br>BN 123.5 | TWR<br>118.7 | SMC<br>121.8 | ACD<br>128.75 | FIA (AH)<br>BN CEN 119.5 | AWIS (AH)<br>134.5 | CTAF+AFRU (AH)<br>AFRU+PAL (AH)<br>118.7 | Bearings are Magnetic<br>Elevations in FEET AMSL |
|------------------------------------|-----------------|--------------|--------------|---------------|--------------------------|--------------------|--|--|



**ARRIVAL: BERNI THREE ALPHA**

- From BERNI track 010° to ELDUX  
**Cross** ELDUX AT or ABV 9000ft
- Track 010° to VANSU  
**Cross** VANSU AT or ABV 7000ft
- Track 010° to ROONY  
**Cross** ROONY AT or ABV 5000ft

**RWY 32:**

- From ROONY turn LEFT track 007° to FIKUL  
**Cross** FIKUL BTN 4000ft and 5000ft
- Track via RNP X RWY 32 (AR) or RNP Z RWY 32

**RWY 14:**

- From ROONY turn LEFT track 007° to FIKUL
- Turn LEFT, track 006° to CHOOK  
**Cross** CHOOK AT or ABV 4000ft
- Turn LEFT, track 329° to AGTEK  
**Cross** AGTEK AT or BLW 6000ft
- Track 329° to KEGAN
- Track via RNP Z RWY 14, NDB or VOR RWY 14 or radar vectors for ILS-Z RWY 14 or LOC-Z RWY 14

**COMMUNICATIONS FAILURE PROCEDURE**

**IF ABLE CTC GOLD COAST ATC ON TEL : 07 5595990**

- Squawk 7600, comply with vertical navigation requirements, but not below MSA.
- Track via the latest STAR clearance to the nominated runway, then fly the most suitable approach in accordance with ERSA EMERG Section 1.5.