

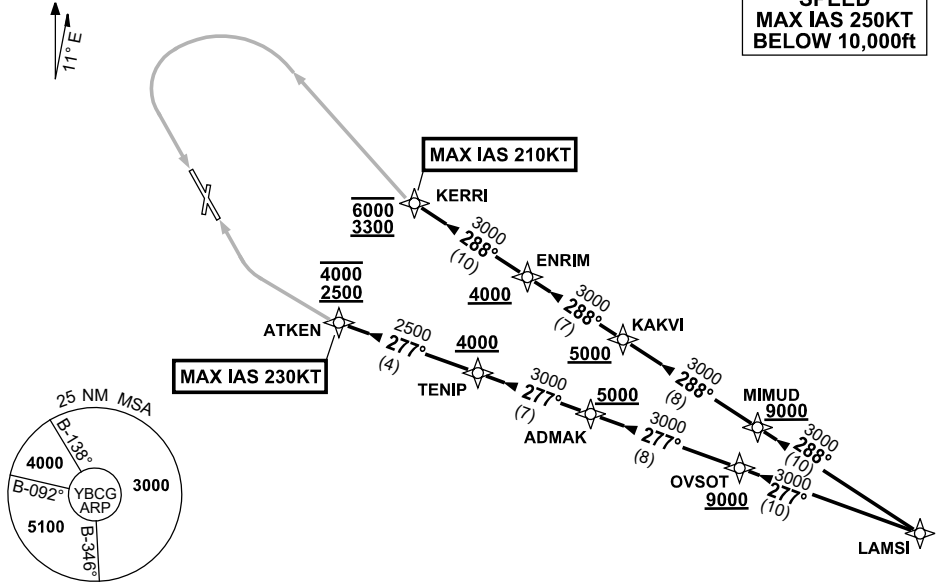
**STANDARD ARRIVAL ROUTE (STAR)  
LAMS1 THREE YANKEE ARRIVAL (RNAV)  
GOLD COAST, QLD (YBCG)**

**21 MAR 2024**

ATIS 112.3 134.5 (H24) (TWR HR)	SMC/ACD 121.8	TWR 118.7 (AFRU+PAL)	APP BN 123.5	AWIS (AH) 134.5	Bearings are Magnetic Elevations in FEET AMSL
---------------------------------------	------------------	----------------------------	-----------------	--------------------	--

NOT TO SCALE

**SPEED  
MAX IAS 250KT  
BELOW 10,000ft**



10 NM MSA 4600

**ARRIVAL: LAMS1 THREE YANKEE**

**RUNWAY 14:**

- From LAMS1 track 288° to MIMUD.  
Cross MIMUD AT or ABV 9000ft.
- Track 288° to KAKVI.  
Cross KAKVI AT or ABV 5000ft.
- Track 288° to ENRIM.  
Cross ENRIM AT or ABV 4000ft.
- Track 288° to KERRI.  
Cross KERRI BTN 3300ft and 6000ft.  
MAX IAS 210KT from KERRI
- At KERRI track via RNP Y RWY 14 (AR)

**RUNWAY 32:**

- From LAMS1 track 277° to OVSOT.  
Cross OVSOT AT or ABV 9000ft.
- Track 277° to ADMAK.  
Cross ADMAK AT or ABV 5000ft.
- Track 277° to TENIP.  
Cross TENIP AT or ABV 4000ft.
- Track 277° to ATKEN.  
Cross ATKEN BTN 2500ft and 4000ft.  
MAX IAS 230KT from ATKEN
- At ATKEN track via RNP Y RWY 32 (AR)

**COMMUNICATIONS FAILURE PROCEDURE  
IF ABLE CTC GOLD COAST ATC ON TEL : 07 55995990**

- Squawk 7600, comply with vertical navigation requirements, but not below MSA.
- Track via the latest STAR clearance to the nominated runway, then fly the most suitable approach in accordance with ERSA EMERG Section 1.5.

Changes: ALT RQMNTS AT KERRI AND ATKEN, MAX IAS AT ATKEN AND KERRI.

BCGSR04-178