

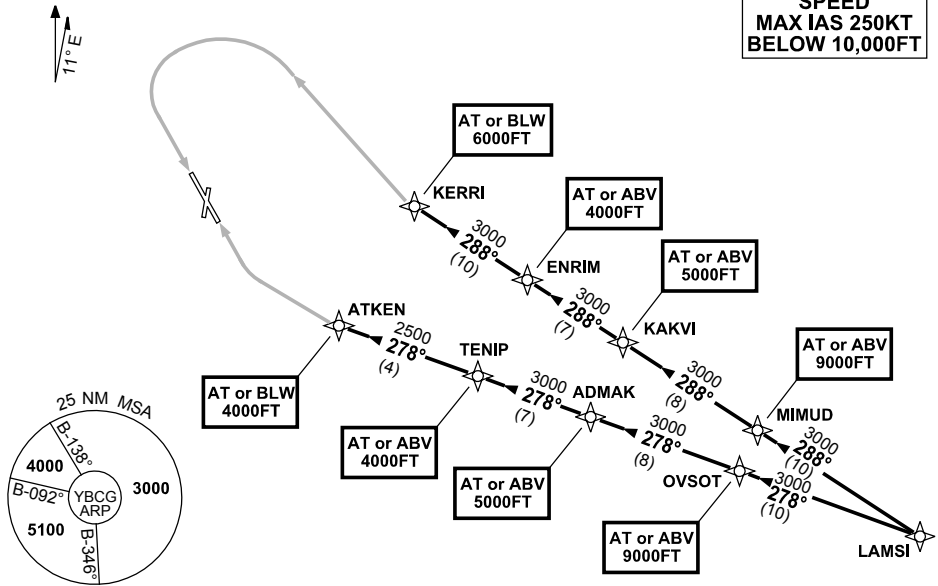
**STANDARD ARRIVAL ROUTE (STAR)  
LAMS1 ONE YANKEE ARRIVAL (RNAV)  
GOLD COAST, QLD (YBCG)**

**15 AUG 2019**

ATIS 112.3 134.5 (H24) (TWR HR)	SMC/ACD 121.8	TWR 118.7 (AFRU+PAL)	APP BN 123.5	AWIS (AH) 134.5	Bearings are Magnetic Elevations in FEET AMSL
---------------------------------------	------------------	----------------------------	-----------------	--------------------	--

NOT TO SCALE

**SPEED  
MAX IAS 250KT  
BELOW 10,000FT**



10 NM MSA 4600

**ARRIVAL: LAMS1 ONE YANKEE**

**RUNWAY 14:**

- From LAMS1 track 288° to MIMUD.  
    **Cross** MIMUD AT or ABV 9000FT.
- Track 288° to KAKVI.  
    **Cross** KAKVI AT or ABV 5000FT.
- Track 288° to ENRIM.  
    **Cross** ENRIM AT or ABV 4000FT.
- Track 288° to KERRI.  
    **Cross** KERRI AT or BLW 6000FT.
- At KERRI track via RNAV-Y (RNP) RWY 14

**RUNWAY 32:**

- From LAMS1 track 278° to OVSOT.  
    **Cross** OVSOT AT or ABV 9000FT.
- Track 278° to ADMAK.  
    **Cross** ADMAK AT or ABV 5000FT.
- Track 278° to TENIP.  
    **Cross** TENIP AT or ABV 4000FT.
- Track 278° to ATKEN.  
    **Cross** ATKEN AT or BLW 4000FT.
- At ATKEN track via RNAV-Y (RNP) RWY 32

**COMMUNICATIONS FAILURE PROCEDURE**

**IF ABLE CTC GOLD COAST ATC ON TEL : 07 55995990**

- Squawk 7600, comply with vertical navigation requirements, but not below MSA.
- Track via the latest STAR clearance to the nominated runway, then fly the most suitable approach in accordance with ERSA EMERG Section 1.5.