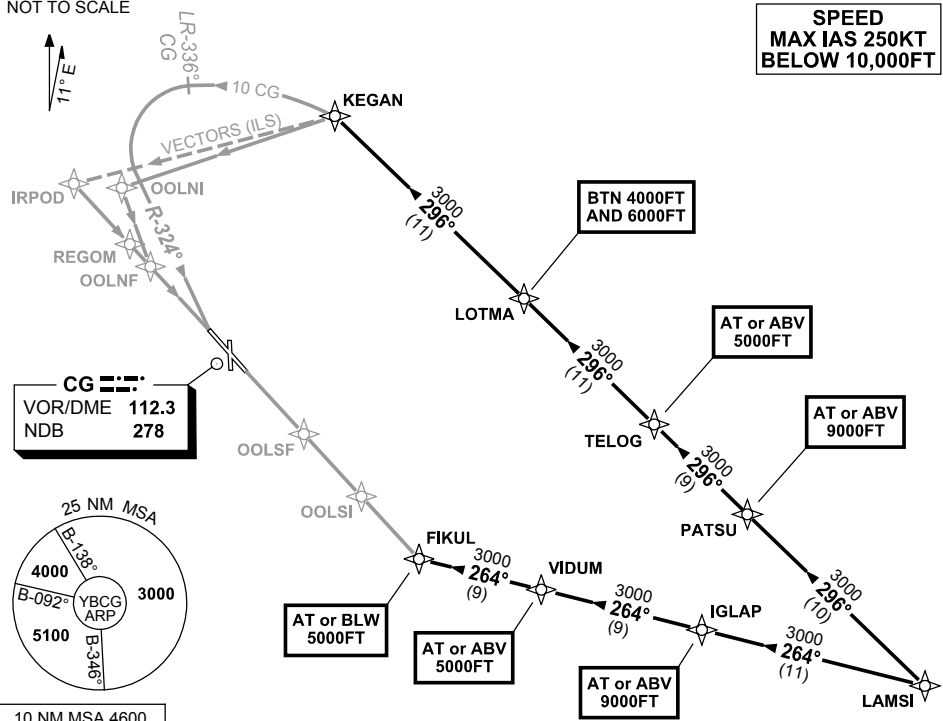


**STANDARD ARRIVAL ROUTE (STAR)
LAMS1 ONE ALPHA ARRIVAL (RNAV)
GOLD COAST, QLD (YBCG)**

15 AUG 2019

ATIS 112.3 134.5 (H24) (TWR HR)	SMC/ACD 121.8	TWR 118.7 (AFRU+PAL)	APP BN 123.5	AWIS (AH) 134.5	Bearings are Magnetic Elevations in FEET AMSL
---------------------------------------	------------------	----------------------------	-----------------	--------------------	--

NOT TO SCALE



ARRIVAL: LAMS1 ONE ALPHA

RUNWAY 14:

- From LAMS1 track 296° to PATSU
Cross PATSU AT or ABV 9000FT
- Track 296° to TELOG
Cross TELOG AT or ABV 5000FT
- Track 296° to LOTMA
Cross LOTMA BTN 4000FT AND 6000FT
- Track 296° to KEGAN
- At KEGAN track via RNAV-Z (GNSS) RWY 14, NDB or VOR RWY 14 or radar vectors for ILS-Z RWY 14 or LOC-Z RWY 14.

RUNWAY 32:

- From LAMS1 track 264° to IGLAP
Cross IGLAP AT or ABV 9000FT
- Track 264° to VIDUM
Cross VIDUM AT or ABV 5000FT
- Track 264° to FIKUL
Cross FIKUL AT or BLW 5000FT.
- At FIKUL track via RNAV-X (RNP) RWY 32 or RNAV-Z (GNSS) RWY 32.

**COMMUNICATIONS FAILURE PROCEDURE
IF ABLE CTC GOLD COAST ATC ON TEL : 07 55995990**

- Squawk 7600, comply with vertical navigation requirements, but not below MSA.
- Track via the latest STAR clearance to the nominated runway, then fly the most suitable approach in accordance with ERSA EMERG Section 1.5.

Changes: NEW STAR ARRIVAL.

BCGSR03-160