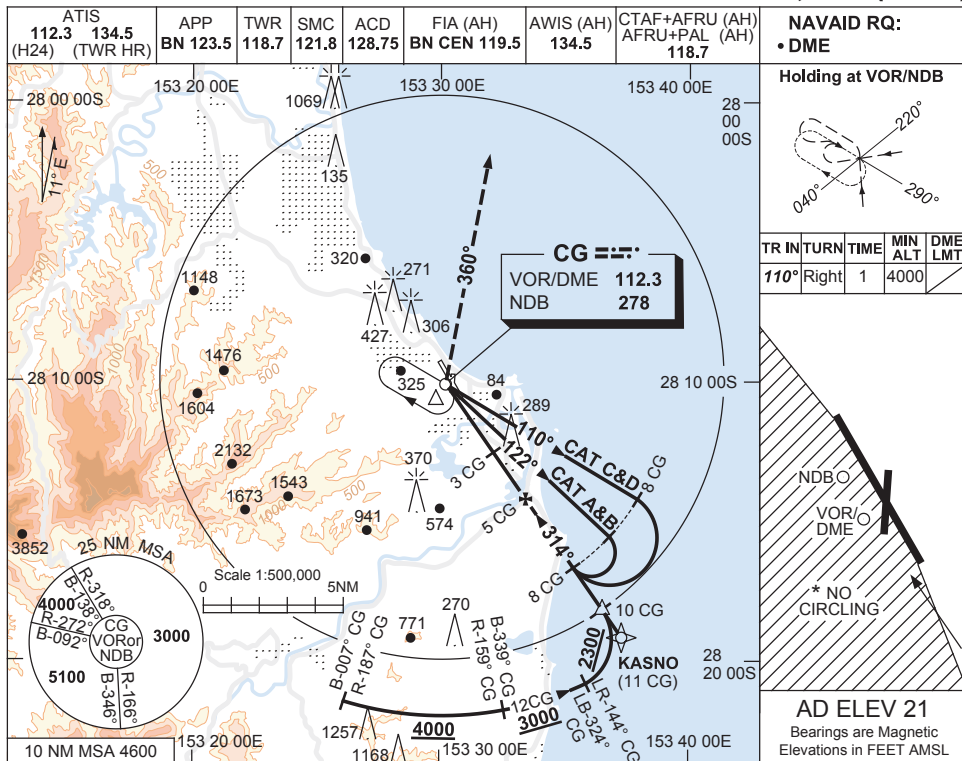


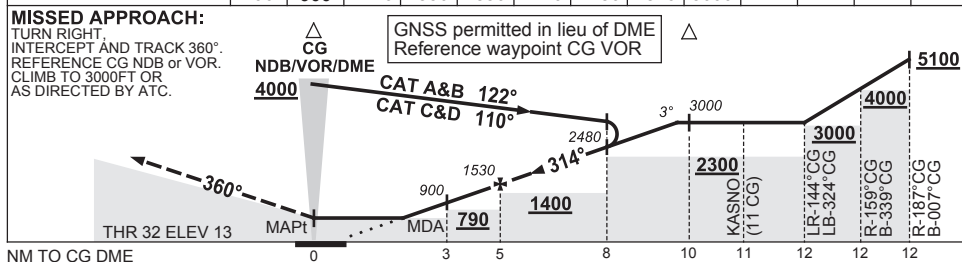
USE QNH

NDB-Z or VOR-Z RWY 32
GOLD COAST, QLD (YBCG)

23 MAY 2019



DIST BY CG DME	2.7	3	4	5	6	7	8	9	9.6				
ALT (3° APCH PATH)	790	900	1210	1530	1850	2170	2480	2810	3000				



CATEGORY	A	B	C	D
S-I NDB/DME or VOR/DME	790 (777-4.4)			
CIRCLING *	860 (839-2.4)	960 (939-4.0)	960 (939-5.0)	
ALTERNATE	(1339-4.4)	(1439-6.0)	(1439-7.0)	

NOTES

1. MAX IAS:
 INITIAL : 210KT.
 HOLDING: 210KT.
- * 2. NO CIRCLING WEST OF RWY 14/32.
3. ACFT MAY BE RADAR VECTORED TO FNA.
4. COLOUR: SEE SPEC NOTICES.

Changes: DIST/ALT TABLE, Editorial.

BCGNB02-159