

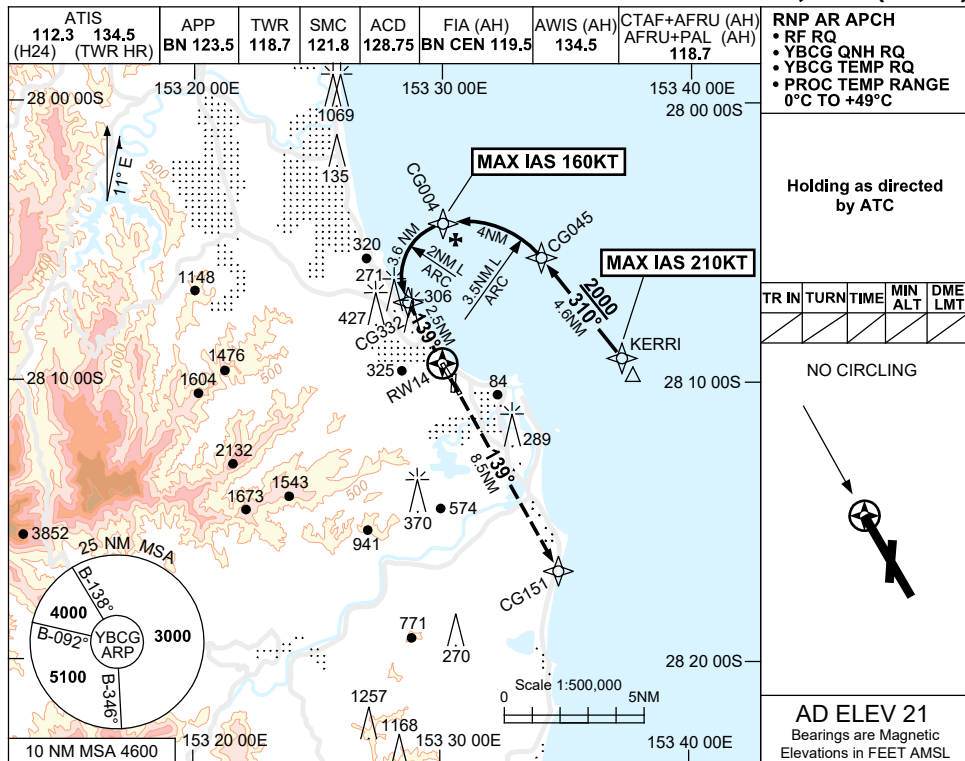
FOR CASA APPROVED OPERATORS ONLY

USE QNH

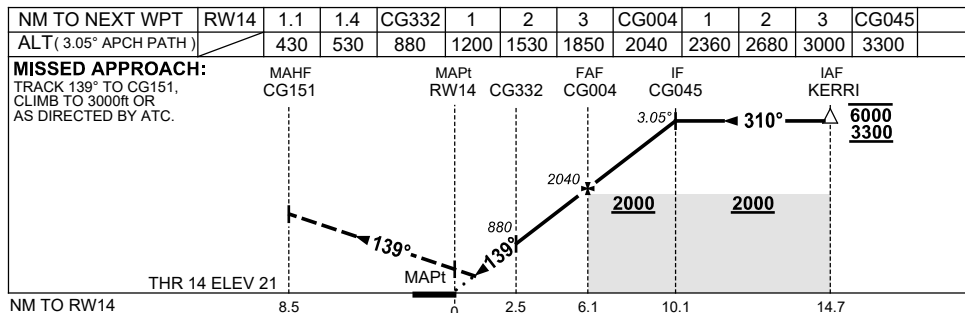
RNP Y RWY 14 (AR)

GOLD COAST, QLD (YBCG)

21 MAR 2024



RNP AR APCH				
<ul style="list-style-type: none"> • RF RQ • YBCG QNH RQ • PROC TEMP RQ • PROC TEMP RANGE 0°C TO +49°C 				
Holding as directed by ATC				
TR	IN	TURN	TIME	DME LMT
NO CIRCLING				
AD ELEV 21				
Bearings are Magnetic Elevations in FEET AMSL				



CATEGORY	A	B	C	D
RNP 0.3		530 (509-2.8)		
RNP 0.11		430 (409-2.3)		
CIRCLING	NOT AUTHORISED			
ALTERNATE	(1239-4.4)		(1339-6.0)	(1339-7.0)

- NOTES**
- COLOUR: SEE SPEC NOTICES.
 - MAX IAS: KERRI : 210 KT.

Changes: ALT RQMNTS AT KERRI, NOTES, Editorial.

BCGGN09-178