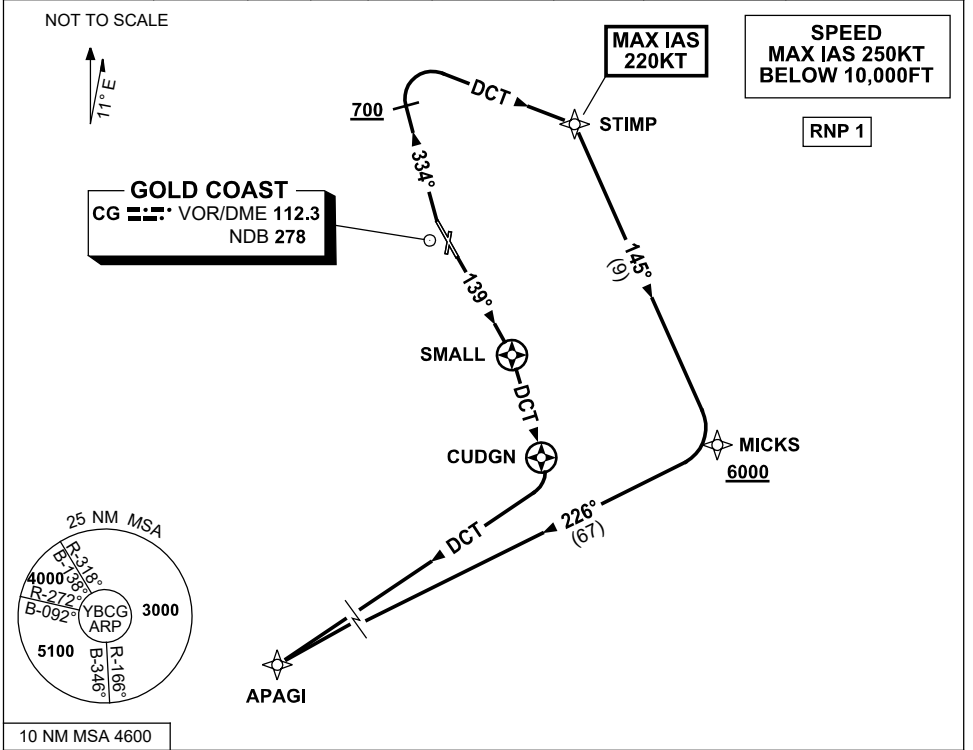


STANDARD INSTRUMENT DEPARTURE (SID)
RWY 14/32 SOUTH (JET) (RNAV)
GOLD COAST, QLD (YBCG)

2 DEC 2021

ATIS 112.3 (H24) 134.5 (TWR HR)	APP BN 123.5	TWR 118.7	SMC 121.8	ACD 128.75	FIA (AH) BN CEN 119.5	AWIS (AH) 134.5	CTAF+AFRU (AH) AFRU+PAL (AH) 118.7	Bearings are Magnetic Elevations in FEET AMSL
------------------------------------	-----------------	--------------	--------------	---------------	--------------------------	--------------------	------------------------------------------	--------------------------------------------------



APAGI FIVE DEPARTURE

RWY 14

- GRAD 4.8% to 1500ft thence 3.3% (6.7% to 7000ft, then 6% to 7500ft)
- Track 139° to SMALL
- Turn RIGHT, track DCT to CUDGN
- Turn RIGHT, track DCT to APAGI, thence as cleared

RWY 32

- MAX IAS 220KT UNTIL STIMP**
GRAD 5.3% to 700ft thence 3.3% (6.3% to 2000ft)
- Not before DER turn RIGHT track 334°
 - AT or ABV 700ft turn RIGHT track DCT to STIMP
 - Turn RIGHT, track 145° to MICKS
 - **Cross MICKS AT or ABV 6000ft**
 - Turn RIGHT, track 226° to APAGI, thence as cleared