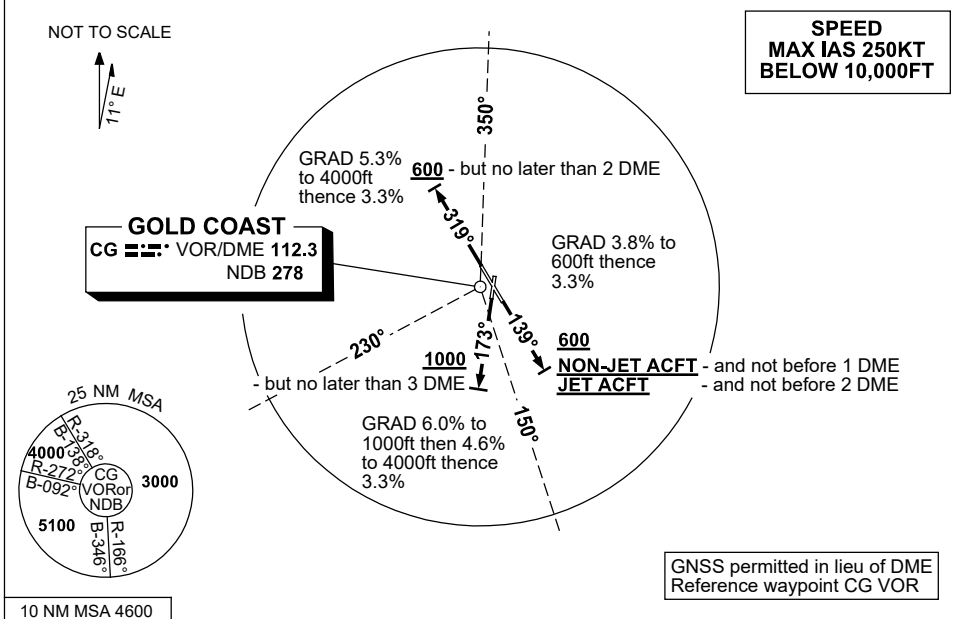


**STANDARD INSTRUMENT DEPARTURES (SID)
GOLD COAST SIX DEPARTURE (RADAR) - RWY 14, 17 & 32
GOLD COAST, QLD (YBCG)**

2 DEC 2021

ATIS 112.3 (H24) 134.5 (TWR HR)	APP BN 123.5	TWR 118.7	SMC 121.8	ACD 128.75	FIA (AH) BN CEN 119.5	AWIS (AH) 134.5	CTAF+AFRU (AH) AFRU+PAL (AH) 118.7	Bearings are Magnetic Elevations in FEET AMSL
------------------------------------	-----------------	--------------	--------------	---------------	--------------------------	--------------------	--	--



10 NM MSA 4600

GOLD COAST SIX DEPARTURE (RADAR)

RWY 14

- Track 139°
- **NON-JET ACFT** - AT or ABV 600ft but not before 1 DME turn to assigned heading or track
- **JET ACFT** - AT or ABV 600ft but not before 2 DME turn to assigned heading or track.
- **When directed**, Contact BN Approach for Radar Vectors.

RWY 17

- Track 173°
- AT or ABV 1000ft but no later than 3 DME turn to assigned heading or track.
- **When directed**, Contact BN Approach for Radar Vectors

RWY 32

- Track 319°
- AT or ABV 600ft but not later than 2 DME, turn to assigned heading or track.
- **When directed**, Contact BN Approach for Radar Vectors

COMMUNICATIONS FAILURE PROCEDURE

On recognition of communication failure:

- Squawk 7600.
- Maintain last assigned vector for two minutes and, if necessary, climb to minimum safe altitude to maintain terrain clearance, then
- Proceed in accordance with the latest ATC route clearance acknowledged.

Changes: RWY 14 AND EAST SECTOR GRAD, RWY 17 AND SW SECTOR GRAD, Editorial.

BCGDP01-169