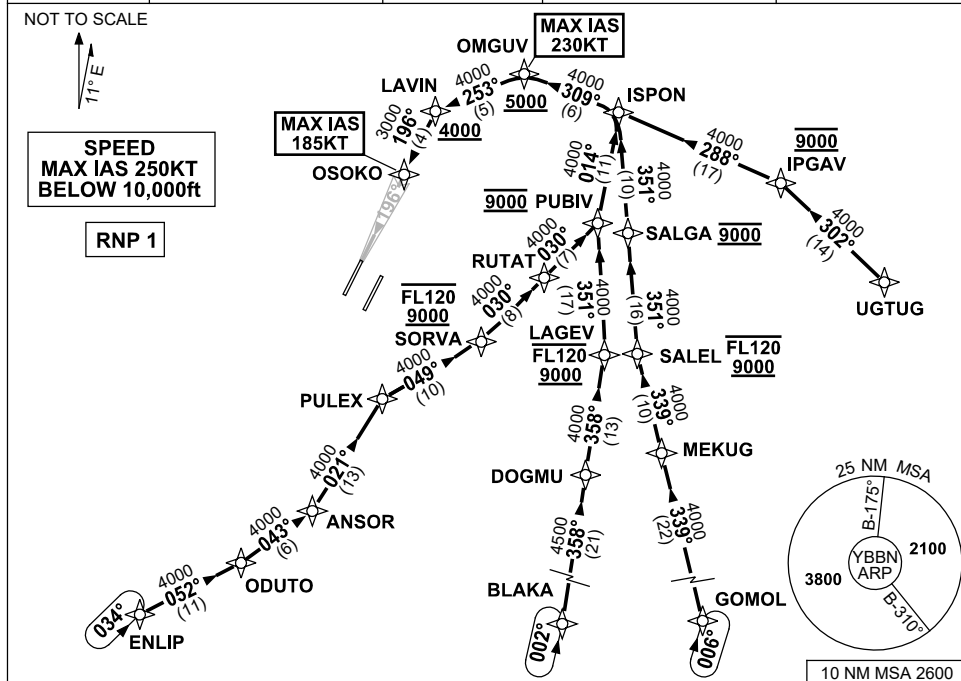


STANDARD INSTRUMENT ARRIVAL (STAR) ISPON TWO ARRIVAL (RNAV) RWY 19R BRISBANE, QLD (YBBN)

20 MAR 2025

ATIS	APP			TWR	SMC			Bearings are Magnetic Elevations in FEET AMSL
113.2 125.5	NORTH	SOUTH	FINALS	01R/19L 120.5 01L/19R 118.0	NORTH	DOM	SOUTH	
	124.7	125.6	119.25		124.05	121.7	122.25	



TRANSITIONS:

ENLIP

- From ENLIP, track 052° to ODUTO
- Turn LEFT, track 043° to ANSOR
- Turn LEFT, track 021° to PULEX
- Turn RIGHT, track 049° to SORVA
Cross SORVA BTN 9000ft and FL120
- Turn LEFT, track 030° to RUTAT
- Track 030° to PUBIV
Cross PUBIV AT 9000ft
- Turn LEFT, track 014° to ISPON

UGTUG

- From UGTUG, track 302° to IPGAV
Cross IPGAV AT 9000ft
- Turn LEFT, track 288° to ISPON

BLAKA

- From BLAKA, track 358° to DOGMU
- Track 358° to LAGEV
Cross LAGEV BTN 9000ft and FL120
- Turn LEFT, track 351° to PUBIV
Cross PUBIV AT 9000ft
- Turn RIGHT, track 014° to ISPON

GOMOL

- From GOMOL, track 339° to MEKUG
- Track 339° to SALEL
Cross SALEL BTN 9000ft and FL120
- Turn RIGHT, track 351° to SALGA
Cross SALGA AT 9000ft
- Track 351° to ISPON

ARRIVAL:

ISPON TWO

RWY 19R

- From ISPON, track 309° to OMGUV
Cross OMGUV AT or ABV 5000ft
- MAX IAS 230KT AT OMGUV

- Turn LEFT, track 253° to LAVIN
Cross LAVIN AT or ABV 4000ft
- Turn LEFT, track 196° to OSOKO for ILS, RNP Z or LOC RWY 19R approach.
MAX IAS 185KT AT OSOKO

COMMUNICATIONS FAILURE: PROCEDURE IN IMC

IF ABLE CTC BN ATC ON TEL: (07) 3866-3694

- Squawk 7600, comply with vertical navigation requirements, but not below MSA.
- Track via the latest STAR clearance to the nominated runway, then fly the most suitable approach in accordance with ERSA EMERG Section 1.5.

Changes: MSA.

BBNSR55-192