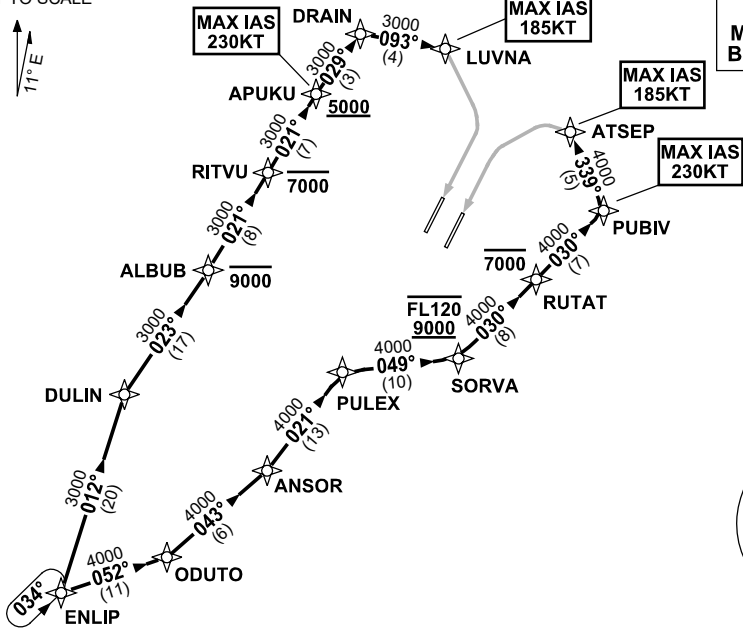


**STANDARD INSTRUMENT ARRIVAL (STAR)
ENLIP TWO X-RAY ARRIVAL (RNAV) RWY 19L/19R
BRISBANE, QLD (YBBN)**

21 MAR 2024

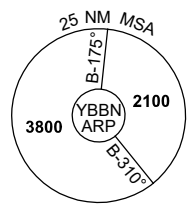
ATIS 113.2 125.5	APP NORTH 124.7 SOUTH 125.6 FINALS 119.25	TWR 01L/19R 118.0 01R/19L 120.5	SMC DOM 121.7 SOUTH 122.25	Bearings are Magnetic Elevations in FEET AMSL
---------------------	--	---------------------------------------	----------------------------------	--

NOT TO SCALE



**SPEED
MAX IAS 250KT
BELOW 10,000ft**

RNP 1



10 NM MSA 2500

ARRIVAL: ENLIP TWO X-RAY

RWY 19L:

- From ENLIP, track 052° to ODUTO
- Turn LEFT, track 043° to ANSOR
- Turn LEFT, track 021° to PULEX
- Turn RIGHT, track 049° to SORVA
Cross SORVA BTN 9000ft and FL120
- Turn LEFT, track 030° to RUTAT
Cross RUTAT AT or BLW 7000ft
- Track 030° to PUBIV
MAX IAS 230KT AT PUBIV
- Turn LEFT, track 339° to ATSEP for RNP X or RNP S RWY 19L (AR) approach
MAX IAS 185KT AT ATSEP

RWY 19R:

- From ENLIP, track 012° to DULIN
- Turn RIGHT, track 023° to ALBUB
Cross ALBUB AT or BLW 9000ft
- Turn LEFT, track 021° to RITVU
Cross RITVU AT or BLW 7000ft
- Track 021° to APUKU
Cross APUKU AT or ABV 5000ft
MAX IAS 230KT AT APUKU
- Turn RIGHT, track 029° to DRAIN
- Turn RIGHT, track 093° to LUVNA for RNP X RWY 19R (AR) approach
MAX IAS 185KT AT LUVNA

**COMMUNICATIONS FAILURE: PROCEDURE IN IMC
IF ABLE CTC BN ATC ON TEL: (07) 3866-3694**

- Squawk 7600, comply with vertical navigation requirements, but not below MSA.
- Track via the latest STAR clearance to the nominated runway, then fly the most suitable approach in accordance with ERSA EMERG Section 1.5.

Changes: PROC NR, RNP S RWY 19L (AR).

BBNSR53-178