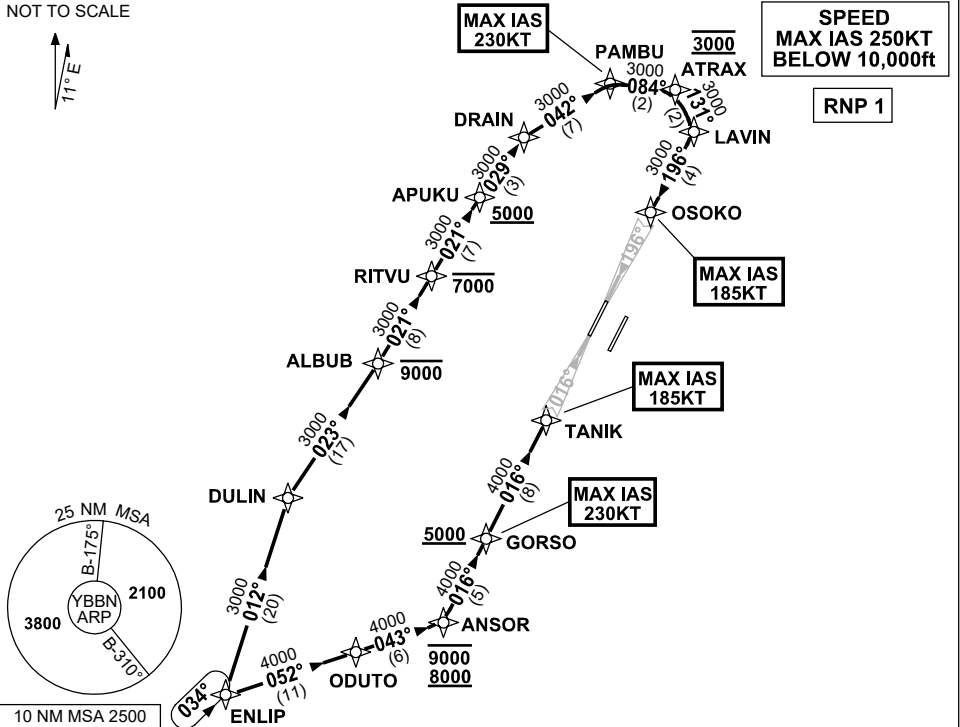


**STANDARD INSTRUMENT ARRIVAL (STAR)  
ENLIP TWO ALPHA ARRIVAL (RNAV) RWY 01L/19R  
BRISBANE, QLD (YBBN)**

21 MAR 2024

ATIS 113.2 125.5	APP NORTH 124.7 SOUTH 125.6 FINALS 119.25	TWR 01L/19R 118.0 01R/19L 120.5	SMC NORTH 124.05 DOM 121.7 SOUTH 122.25	Bearings are Magnetic Elevations in FEET AMSL
---------------------	--	---------------------------------------	--	--

NOT TO SCALE



10 NM MSA 2500

**ARRIVAL: ENLIP TWO ALPHA**

**RWY 01L:**

- From ENLIP, track 052° to ODUTO
- Turn LEFT, track 043° to ANSOR  
Cross ANSOR BTN 8000ft and 9000ft
- Turn LEFT, track 016° to GORSO  
Cross GORSO AT or ABV 5000ft  
MAX IAS 230KT AT GORSO
- Track 016° to TANIK for ILS, RNP Z or LOC RWY 01L approach  
MAX IAS 185KT AT TANIK

**RWY 19R:**

- From ENLIP, track 012° to DULIN
- Turn RIGHT, track 023° to ALBUB  
Cross ALBUB AT or BLW 9000ft
- Turn LEFT, track 021° to RITVU  
Cross RITVU AT or BLW 7000ft
- Track 021° to APUKU  
Cross APUKU AT or ABV 5000ft
- Turn RIGHT, track 029° to DRAIN
- Turn RIGHT, track 042° to PAMBU  
MAX IAS 230KT AT PAMBU
- Turn RIGHT, track 084° to ATRAX  
Cross ATRAX AT 3000ft
- Turn RIGHT, track 131° to LAVIN
- Turn RIGHT, track 196° to OSOKO for ILS, RNP Z or LOC RWY 19R approach  
MAX IAS 185KT AT OSOKO

**COMMUNICATIONS FAILURE: PROCEDURE IN IMC  
IF ABLE CTC BN ATC ON TEL: (07) 3866-3694**

- Squawk 7600, comply with vertical navigation requirements, but not below MSA.
- Track via the latest STAR clearance to the nominated runway, then fly the most suitable approach in accordance with ERSA EMERG Section 1.5.

Changes: PROC NR.

BBNSR51-178