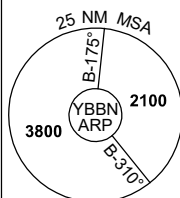


STANDARD INSTRUMENT ARRIVAL (STAR) SMOKA ONE MIKE ARRIVAL (RNAV) RWY 01R BRISBANE, QLD (YBBN)

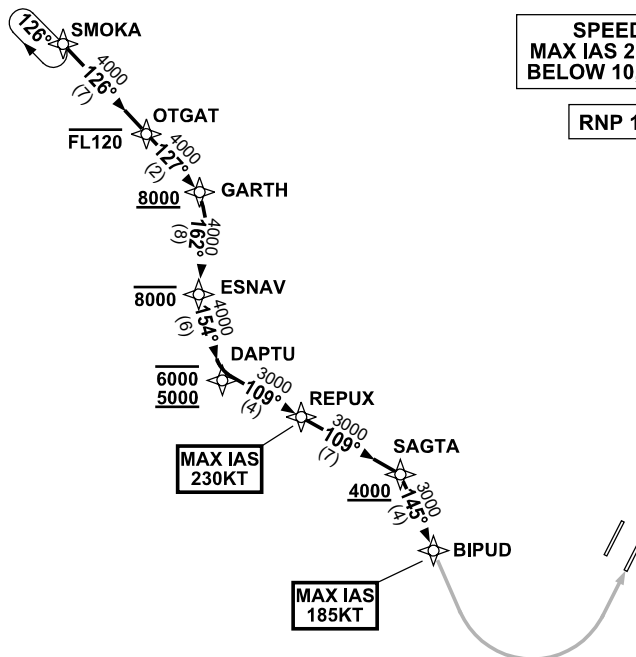
20 MAR 2025

ATIS	APP			TWR	SMC			Bearings are Magnetic Elevations in FEET AMSL
113.2 125.5	NORTH	SOUTH	FINALS	01R/19L 120.5 01L/19R 118.0	NORTH	DOM	SOUTH	
	124.7	125.6	119.25		124.05	121.7	122.25	

NOT TO SCALE



10 NM MSA 2600



ARRIVAL: SMOKA ONE MIKE

RWY 01R:

- From SMOKA, track 126° to OTGAT
Cross OTGAT AT or BLW FL120
- Track 127° to GARTH
Cross GARTH AT or ABV 8000ft
- Turn RIGHT track 162° to ESNAP
Cross ESNAP AT or BLW 8000ft
- Turn LEFT, track 154° to DAPTU
Cross DAPTU BTN 5000ft and 6000ft
- Turn LEFT, track 109° to REPUX
MAX IAS 230KT AT REPUX
- Track 109° to SAGTA
Cross SAGTA AT or ABV 4000ft
- Turn RIGHT, track 145° to BIPUD for
RNP M or RNP R RWY 01R (AR) approach
MAX IAS 185KT AT BIPUD

COMMUNICATIONS FAILURE: PROCEDURE IN IMC IF ABLE CTC BN ATC ON TEL: (07) 3866-3694

- Squawk 7600, comply with vertical navigation requirements, but not below MSA.
- Track via the latest STAR clearance to the nominated runway, then fly the most suitable approach in accordance with ERSA EMERG Section 1.5.

Changes: MSA.

BBNSR42-182