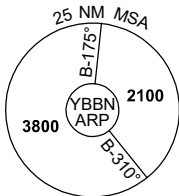
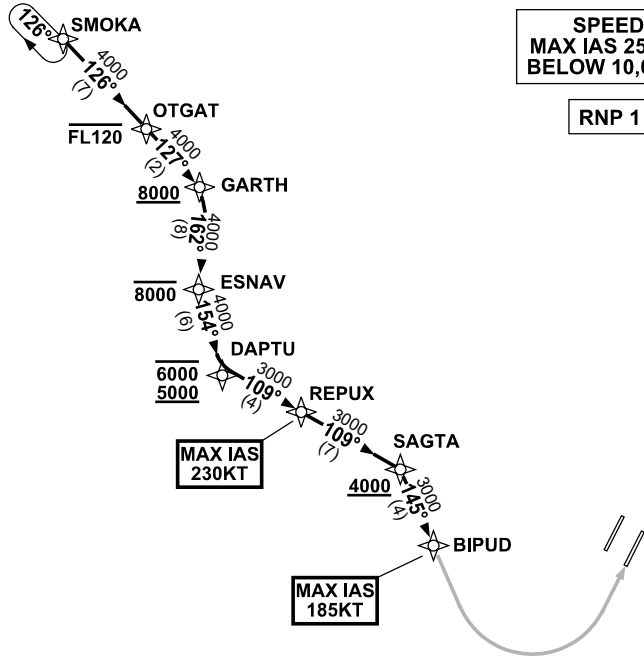


**STANDARD INSTRUMENT ARRIVAL (STAR)  
SMOKA ONE MIKE ARRIVAL (RNAV) RWY 01R  
BRISBANE, QLD (YBBN)**

21 MAR 2024

ATIS 113.2 125.5	APP NORTH 124.7 SOUTH 125.6 FINALS 119.25	TWR 01R/19L 120.5 01L/19R 118.0	SMC DOM 121.7 SOUTH 122.25	Bearings are Magnetic Elevations in FEET AMSL
---------------------	--	---------------------------------------	-------------------------------	--

NOT TO SCALE



10 NM MSA 2500

**ARRIVAL: SMOKA ONE MIKE**

**RWY 01R:**

- From SMOKA, track 126° to OTGAT  
**Cross** OTGAT AT or BLW FL120
- Track 127° to GARTH  
**Cross** GARTH AT or ABV 8000ft
- Turn RIGHT track 162° to ESNAP  
**Cross** ESNAP AT or BLW 8000ft
- Turn LEFT, track 154° to DAPTU  
**Cross** DAPTU BTN 5000ft and 6000ft
- Turn LEFT, track 109° to REPUX  
MAX IAS 230KT AT REPUX
- Track 109° to SAGTA  
**Cross** SAGTA AT or ABV 4000ft
- Turn RIGHT, track 145° to BIPUD for RNP M or RNP R RWY 01R (AR) approach  
MAX IAS 185KT AT BIPUD

**COMMUNICATIONS FAILURE: PROCEDURE IN IMC  
IF ABLE CTC BN ATC ON TEL: (07) 3866-3694**

- Squawk 7600, comply with vertical navigation requirements, but not below MSA.
- Track via the latest STAR clearance to the nominated runway, then fly the most suitable approach in accordance with ERSA EMERG Section 1.5.

Changes: PROC NR, RNP R RWY 01R (AR)

BBNSR42-178