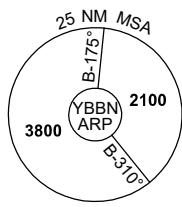
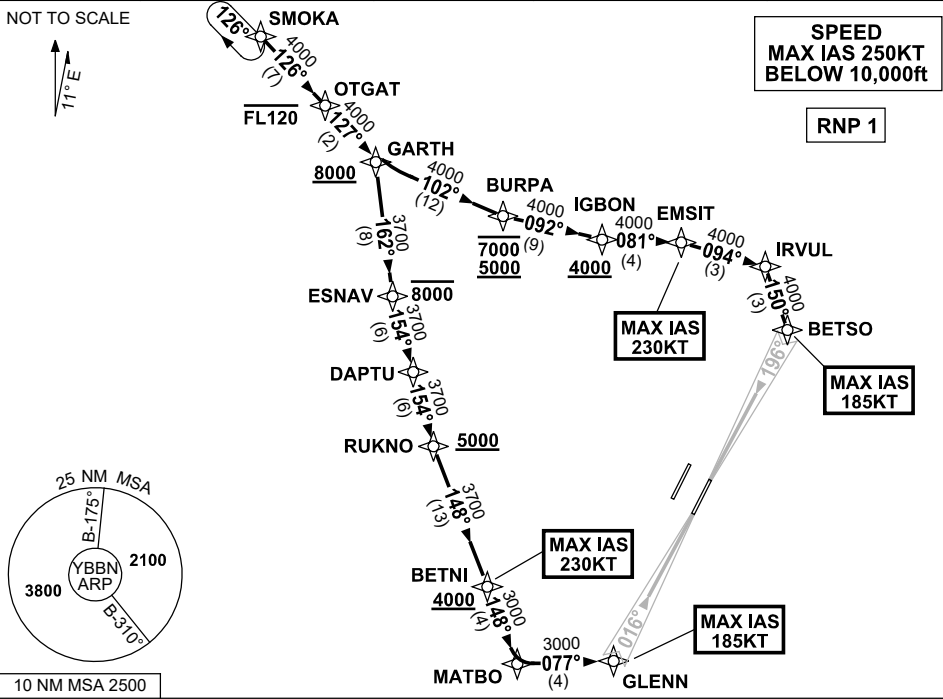


**STANDARD INSTRUMENT ARRIVAL (STAR)
SMOKA ONE ALPHA ARRIVAL (RNAV) RWY 01R/19L
BRISBANE, QLD (YBBN)**

21 MAR 2024

ATIS 113.2 125.5	APP			TWR 01R/19L 120.5 01L/19R 118.0	SMC			Bearings are Magnetic Elevations in FEET AMSL
	NORTH 124.7	SOUTH 125.6	FINALS 119.25		NORTH 124.05	DOM 121.7	SOUTH 122.25	

NOT TO SCALE



ARRIVAL: SMOKA ONE ALPHA

RWY 01R:

- From SMOKA, track 126° to OTGAT
Cross OTGAT AT or BLW FL120
- Track 127° to GARTH
Cross GARTH AT or ABV 8000ft
- Turn RIGHT, track 162° to ESNV
Cross ESNV AT or BLW 8000ft
- Turn LEFT, track 154° to DAPTU
- Track 154° to RUKNO
Cross RUKNO AT or ABV 5000ft
- Turn LEFT, track 148° to BETNI
Cross BETNI AT or ABV 4000ft
MAX IAS 230KT AT BETNI
- Track 148° to MATBO
- Turn LEFT, track 077° to GLENN for ILS,
RNP Z, LOC or RNP T RWY 01R approach
MAX IAS 185KT AT GLENN

RWY 19L:

- From SMOKA, track 126° to OTGAT
Cross OTGAT AT or BLW FL120
- Track 127° to GARTH
Cross GARTH AT or ABV 8000ft
- Turn LEFT, track 102° to BURPA
Cross BURPA BTN 5000ft and 7000ft
- Turn LEFT, track 092° to IGBON
Cross IGBON AT or ABV 4000ft
- Turn LEFT, track 081° to EMSIT
MAX IAS 230KT AT EMSIT
- Turn RIGHT, track 094° to IRVUL
- Turn RIGHT, track 150° to BETSO for ILS,
RNP Z, LOC or RNP T RWY 19L approach
MAX IAS 185KT AT BETSO

COMMUNICATIONS FAILURE: PROCEDURE IN IMC

IF ABLE CTC BN ATC ON TEL: (07) 3866-3694

- Squawk 7600, comply with vertical navigation requirements, but not below MSA.
- Track via the latest STAR clearance to the nominated runway, then fly the most suitable approach in accordance with ERSA EMERG Section 1.5.

Changes: PROC NR, RNP T RWY 01R/19L.

BBNSR41-178