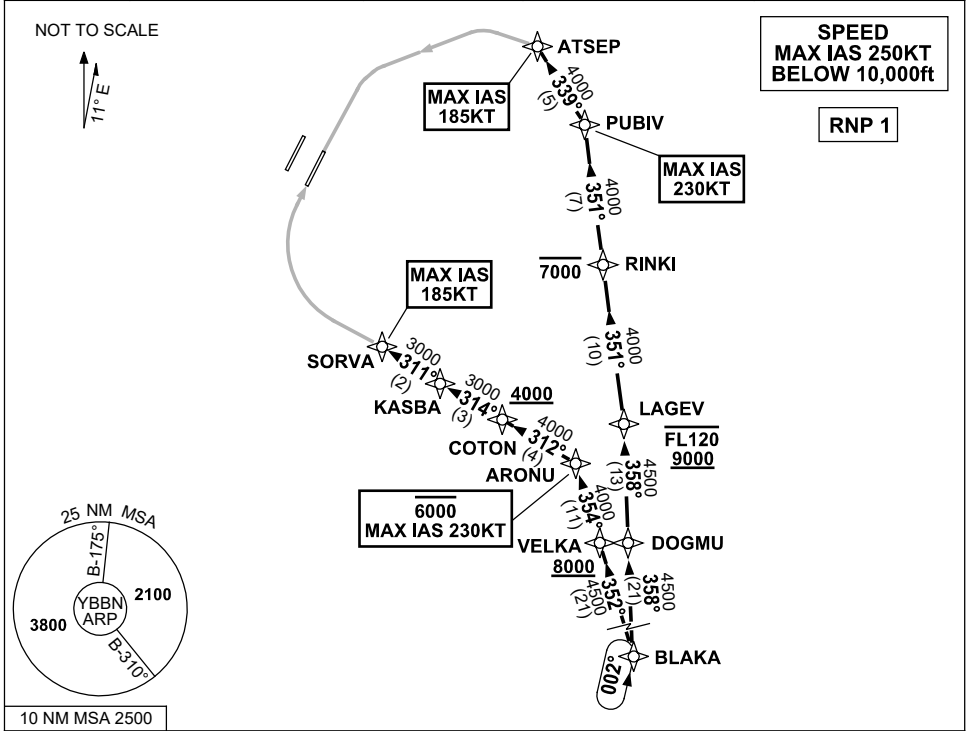


**STANDARD INSTRUMENT ARRIVAL (STAR)  
BLAKA FIVE X-RAY ARRIVAL (RNAV) RWY 01R/19L  
BRISBANE, QLD (YBBN)**

**21 MAR 2024**

ATIS 113.2 125.5	APP NORTH SOUTH FINALS 124.7 125.6 119.25	TWR 01R/19L 120.5 01L/19R 118.0	SMC DOM SOUTH 121.7 122.25	Bearings are Magnetic Elevations in FEET AMSL
---------------------	---	---------------------------------------	----------------------------------	--



**ARRIVAL: BLAKA FIVE X-RAY**

**RWY 01R:**

- From BLAKA, track 352° to VELKA  
**Cross** VELKA AT or ABV 8000ft
- Turn RIGHT, track 354° to ARONU  
**Cross** ARONU AT or BLW 6000ft  
MAX IAS 230KT AT ARONU
- Turn LEFT, track 312° to COTON  
**Cross** COTON AT or ABV 4000ft
- Turn RIGHT, track 314° to KASBA
- Turn LEFT, track 311° to SORVA for the  
RNP X or RNP S RWY 01R (AR) approach  
MAX IAS 185KT AT SORVA

**RWY 19L:**

- From BLAKA, track 358° to DOGMU
- Turn LEFT, track 358° to LAGEV  
**Cross** LAGEV BTN 9000ft and FL120
- Turn LEFT, track 351° to RINKI  
**Cross** RINKI AT or BLW 7000ft
- Track 351° to PUBIV  
MAX IAS 230KT AT PUBIV
- Turn LEFT, track 339° to ATSEP for the  
RNP X or RNP S RWY 19L (AR) approach  
MAX IAS 185KT AT ATSEP

**COMMUNICATIONS FAILURE: PROCEDURE IN IMC  
IF ABLE CTC BN ATC ON TEL: (07) 3866-3694**

- Squawk 7600, comply with vertical navigation requirements, but not below MSA.
- Track via the latest STAR clearance to the nominated runway, then fly the most suitable approach in accordance with ERSA EMERG Section 1.5.

Changes: PROC NR, RNP S RWY 01R/19L (AR).

BBNSR39 - 178