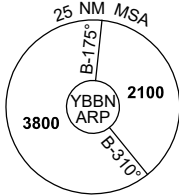
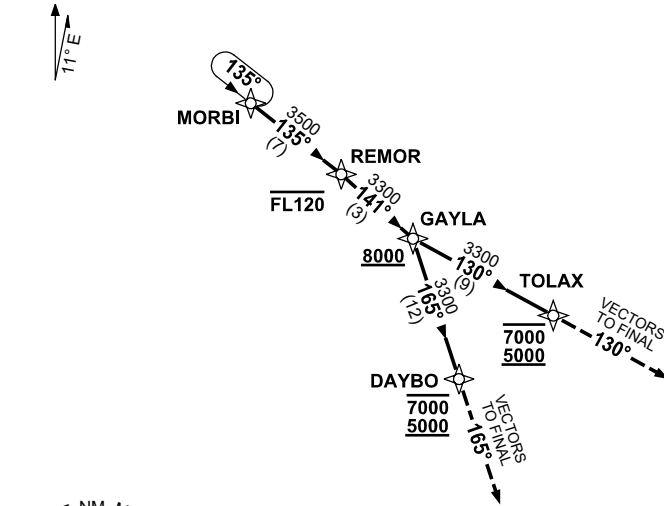


**STANDARD INSTRUMENT ARRIVAL (STAR)
MORBI TWO VICTOR ARRIVAL (RNAV) RWY 01L/19R
BRISBANE, QLD (YBBN)**

21 MAR 2024

ATIS 113.2 125.5	APP NORTH 124.7 SOUTH 125.6 FINALS 119.25	TWR 01L/19R 118.0 01R/19L 120.5	SMC DOM 121.7 SOUTH 122.25	Bearings are Magnetic Elevations in FEET AMSL
---------------------	--	---------------------------------------	-------------------------------	--

NOT TO SCALE



10 NM MSA 2500

ARRIVAL: MORBI TWO VICTOR

RWY 01L:

- From MORBI track 135° to REMOR
Cross REMOR AT or BLW FL120
- Turn RIGHT, track 141° to GAYLA
Cross GAYLA AT or ABV 8000ft
- Turn RIGHT, track 165° to DAYBO
Cross DAYBO BTN 5000ft and 7000ft
- Track 165°, EXPECT radar vectors to final

RWY 19R:

- From MORBI track 135° to REMOR
Cross REMOR AT or BLW FL120
- Turn RIGHT, track 141° to GAYLA
Cross GAYLA AT or ABV 8000ft
- Turn LEFT track 130° to TOLAX
Cross TOLAX BTN 5000ft and 7000ft
- Track 130°, EXPECT radar vectors to final

**COMMUNICATIONS FAILURE: PROCEDURE IN IMC
IF ABLE CTC BN ATC ON TEL: (07) 3866-3694**

- Squawk 7600, comply with vertical navigation requirements, but not below MSA.
- Track via the latest STAR clearance to the nominated runway, then fly the most suitable approach in accordance with ERSA EMERG Section 1.5.

Changes: PROC NR.

BBNSR34-178