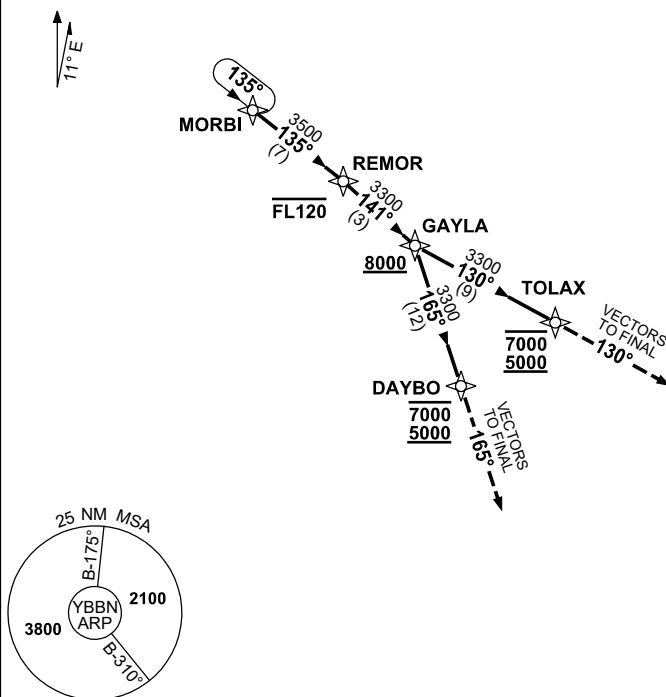


**STANDARD INSTRUMENT ARRIVAL (STAR)
MORBI ONE VICTOR ARRIVAL (RNAV) RWY 01L/19R
BRISBANE, QLD (YBBN)**

16 JUN 2022

| | | | | |
|---------------------|--|---------------------------------------|-------------------------------|--|
| ATIS 113.2 125.5 | APP NORTH 124.7 SOUTH 125.6 FINALS 119.25 | TWR 01L/19R 118.0 01R/19L 120.5 | SMC DOM 121.7 SOUTH 122.25 | Bearings are Magnetic Elevations in FEET AMSL |
|---------------------|--|---------------------------------------|-------------------------------|--|

NOT TO SCALE



ARRIVAL: MORBI ONE VICTOR

RWY 01L:

- From MORBI track 135° to REMOR
Cross REMOR AT or BLW FL120
- Turn RIGHT, track 141° to GAYLA
Cross GAYLA AT or ABV 8000ft
- Turn RIGHT, track 165° to DAYBO
Cross DAYBO BTN 5000ft and 7000ft
- Track 165°, EXPECT radar vectors to final

RWY 19R:

- From MORBI track 135° to REMOR
Cross REMOR AT or BLW FL120
- Turn RIGHT, track 141° to GAYLA
Cross GAYLA AT or ABV 8000ft
- Turn LEFT track 130° to TOLAX
Cross TOLAX BTN 5000ft and 7000ft
- Track 130°, EXPECT radar vectors to final

**COMMUNICATIONS FAILURE: PROCEDURE IN IMC
IF ABLE CTC BN ATC ON TEL: (07) 3866-3694**

- Squawk 7600, comply with vertical navigation requirements, but not below MSA.
- Track via the latest STAR clearance to the nominated runway, then fly the most suitable approach in accordance with ERSA EMERG Section 1.5.

Changes: MORBI-REMOR TRACK, GAYLA-TOLAX TRACK, Editorial.

BBNSR34-171