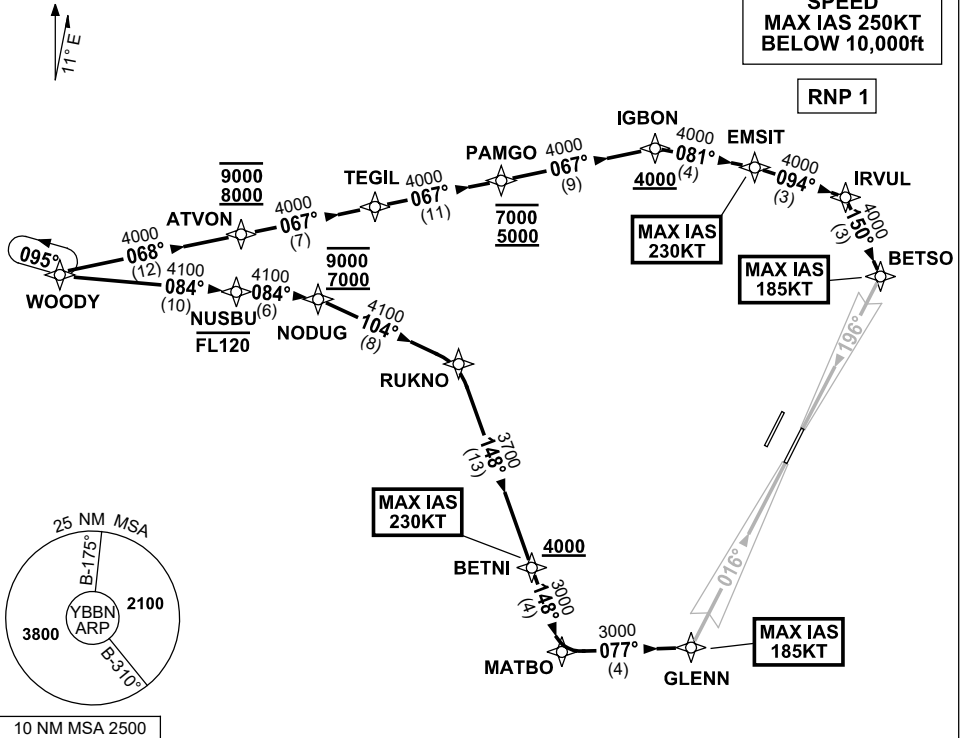


**STANDARD INSTRUMENT ARRIVAL (STAR)  
WOODY TWO ALPHA ARRIVAL (RNAV) RWY 01R/19L  
BRISBANE, QLD (YBBN)**

**21 MAR 2024**

ATIS 113.2 125.5	APP NORTH 124.7 SOUTH 125.6 FINALS 119.25	TWR 01R/19L 120.5 01L/19R 118.0	SMC DOM 121.7 SOUTH 122.25	Bearings are Magnetic Elevations in FEET AMSL
---------------------	----------------------------------------------	---------------------------------------	-------------------------------	--------------------------------------------------

NOT TO SCALE



**ARRIVAL: WOODY TWO ALPHA**

**RWY 01R:**

- From WOODY track 084° to NUSBU  
Cross NUSBU AT or BLW FL120
- Track 084° to NODUG  
Cross NODUG BTN 7000ft and 9000ft
- Turn RIGHT, track 104° to RUKNO
- Turn RIGHT, track 148° to BETNI  
Cross BETNI AT or ABV 4000ft  
MAX IAS 230KT AT BETNI
- Track 148° to MATBO
- Turn LEFT, track 077° to GLENN for ILS,  
RNP Z, LOC or RNP T RWY 01R approach  
MAX IAS 185KT AT GLENN

**RWY 19L:**

- From WOODY track 068° to ATVON  
Cross ATVON BTN 8000ft and 9000ft
- Track 067° to TEGIL  
Cross PAMGO BTN 5000FT and 7000FT
- Track 067° to IGBON  
Cross IGBON AT or ABV 4000ft
- Turn RIGHT, track 081° to EMSIT  
MAX IAS 230KT AT EMSIT
- Turn RIGHT, track 094° to IRVUL
- Turn RIGHT, track 150° to BETSO for ILS,  
RNP Z, LOC or RNP T RWY 19L approach  
MAX IAS 185KT AT BETSO

**COMMUNICATIONS FAILURE: PROCEDURE IN IMC  
IF ABLE CTC BN ATC ON TEL: (07) 3866-3694**

- Squawk 7600, comply with vertical navigation requirements, but not below MSA.
- Track via the latest STAR clearance to the nominated runway, then fly the most suitable approach in accordance with ERSA EMERG Section 1.5.

Changes: PROC NR, RNP T RWY 01R/19L.

BBNSR32-178