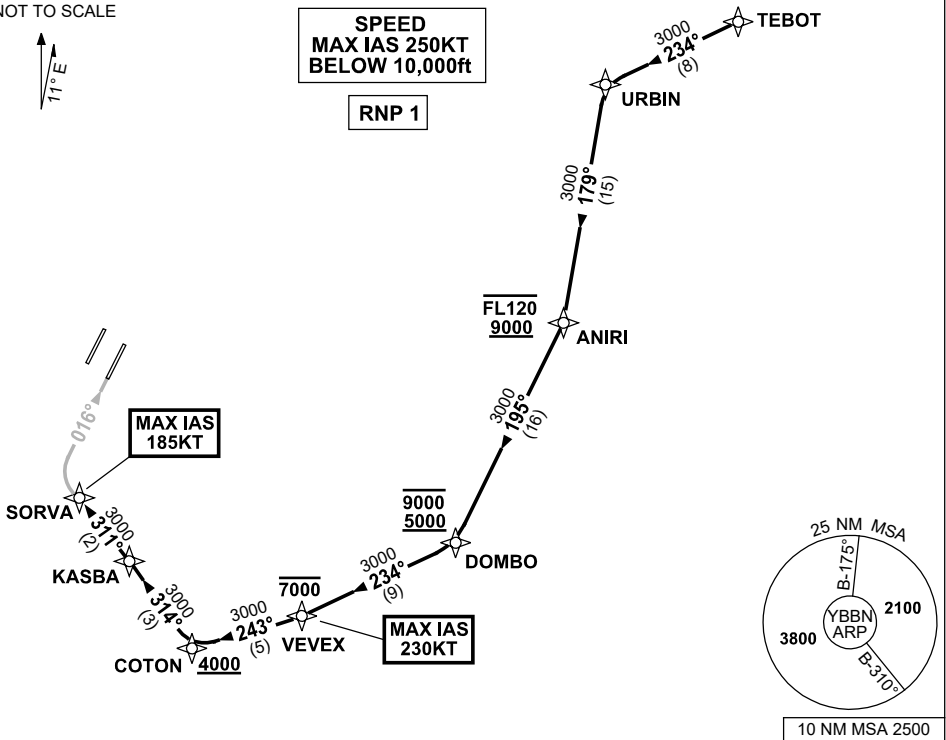


**STANDARD INSTRUMENT ARRIVAL (STAR)  
TEBOT TWO X-RAY ARRIVAL (RNAV) RWY 01R  
BRISBANE, QLD (YBBN)**

21 MAR 2024

ATIS 113.2 125.5	APP NORTH 124.7 SOUTH 125.6	FINALS 119.25	TWR 01R/19L 120.5 01L/19R 118.0	SMC DOM 121.7 SOUTH 122.25	Bearings are Magnetic Elevations in FEET AMSL
---------------------	-----------------------------------	------------------	---------------------------------------	----------------------------------	--

NOT TO SCALE



**ARRIVAL:      TEBOT TWO X-RAY**

- RWY 01R:**
- From TEBOT track 234° to URBIN
  - Turn LEFT, track 179° to ANIRI  
    **Cross** ANIRI BTN 9000ft and FL120
  - Turn RIGHT, track 195° to DOMBO  
    **Cross** DOMBO BTN 5000ft AND 9000ft
  - Turn RIGHT, track 234° to VEVEX  
    **Cross** VEVEX AT or BLW 7000ft  
    MAX IAS 230KT AT VEVEX
  - Turn RIGHT, track 243° to COTON  
    **Cross** COTON AT or ABV 4000ft
  - Turn RIGHT, track 314° to KASBA
  - Turn LEFT, track 311° to SORVA for  
    RNP X or RNP S RWY 01R (AR) approach  
    MAX IAS 185KT AT SORVA

**COMMUNICATIONS FAILURE: PROCEDURE IN IMC  
IF ABLE CTC BN ATC ON TEL: (07) 3866-3694**

- Squawk 7600, comply with vertical navigation requirements, but not below MSA.
- Track via the latest STAR clearance to the nominated runway, then fly the most suitable approach in accordance with ERSA EMERG Section 1.5.

Changes: PROC NR, RNP S RWY 01R (AR).

BBNSR30-178