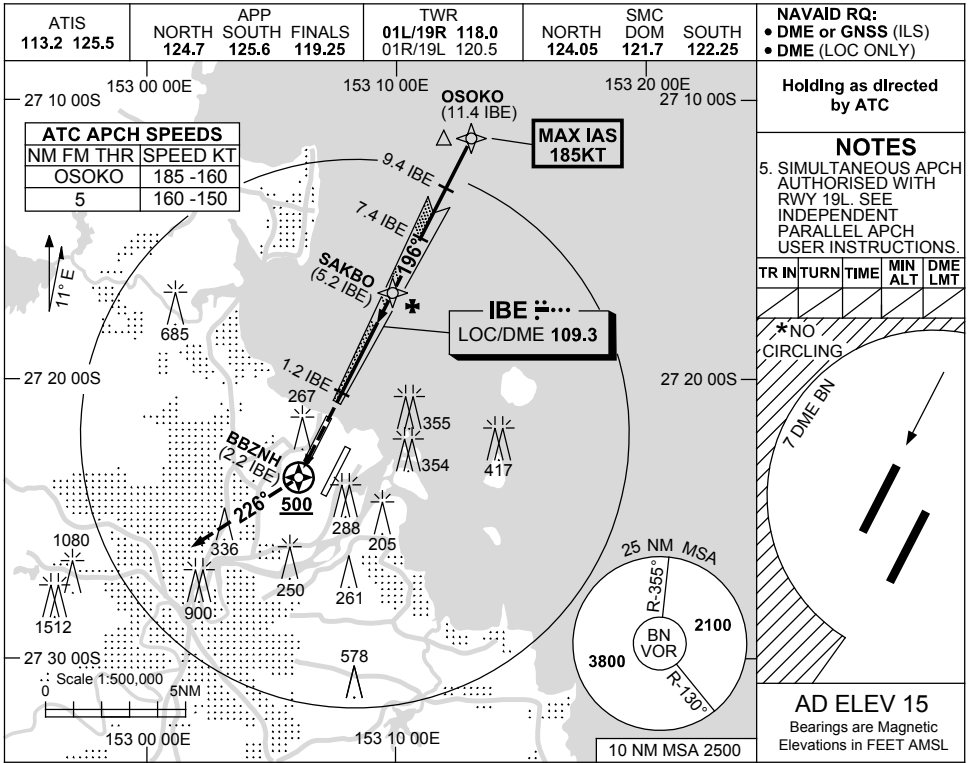


USE QNH

ILS or LOC RWY 19R  
**BRISBANE, QLD (YBBN)**

23 MAR 2023



27 10 00S 153 00 00E 153 10 00E 153 20 00E 27 10 00S

27 20 00S 153 00 00E 153 10 00E 153 20 00E 27 20 00S

27 30 00S 153 00 00E 153 10 00E 153 20 00E 27 30 00S

Scale 1:500,000 5NM

10 NM MSA 2500

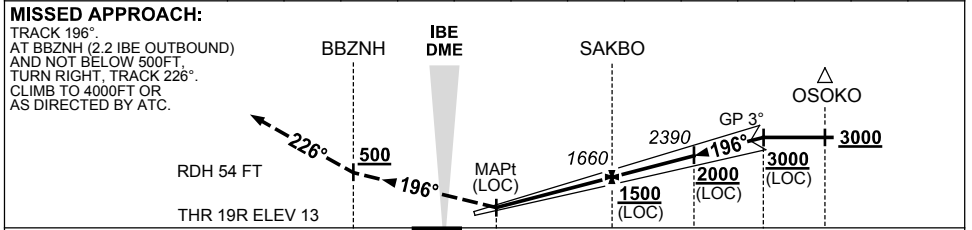
**AD ELEV 15**  
 Bearings are Magnetic  
 Elevations in FEET AMSL

**NOTES**

5. SIMULTANEOUS APCH AUTHORISED WITH RWY 19L. SEE INDEPENDENT PARALLEL APCH USER INSTRUCTIONS.

TR	INT	TURN	TIME	MIN ALT	DME LMT
*NO CIRCLING					

NM TO IBE DME	1.3	2	3	4	5.2	6	7.4	8	9.4				
ALT (3° APCH PATH)	430	640	960	1280	1660	1920	2390	2550	3000				



NM TO IBE DME		2.2	0	1.2	5.2	7.4	9.4	11.4	
NM TO THR 19R		2.3	0.20	1	5	7.3	9.2	11.2	

CATEGORY	NOTES			
	A	B	C	D
S-I ILS		220 (207) 0.8		550 RVR
S-I LOC		430 (415-1.6)		
CIRCLING *	650 (635-2.4)		780 (765-4.0)	850 (835-5.0)
ALTERNATE ‡	(1135-4.4)		(1265-6.0)	(1335-7.0)

\* 1. MAX IAS: OSOKO : 185KT.  
 2. CAT D ACFT NO CIRCLING WEST OF 01R/19L BEYOND 7 DME BN.  
 ‡ 3. SPECIAL ALTN MNM 700/2.5 KM.  
 4. ACFT MAY BE RADAR VECTORED TO FNA.

Changes: VIS MINIMA.

BBNII07-174