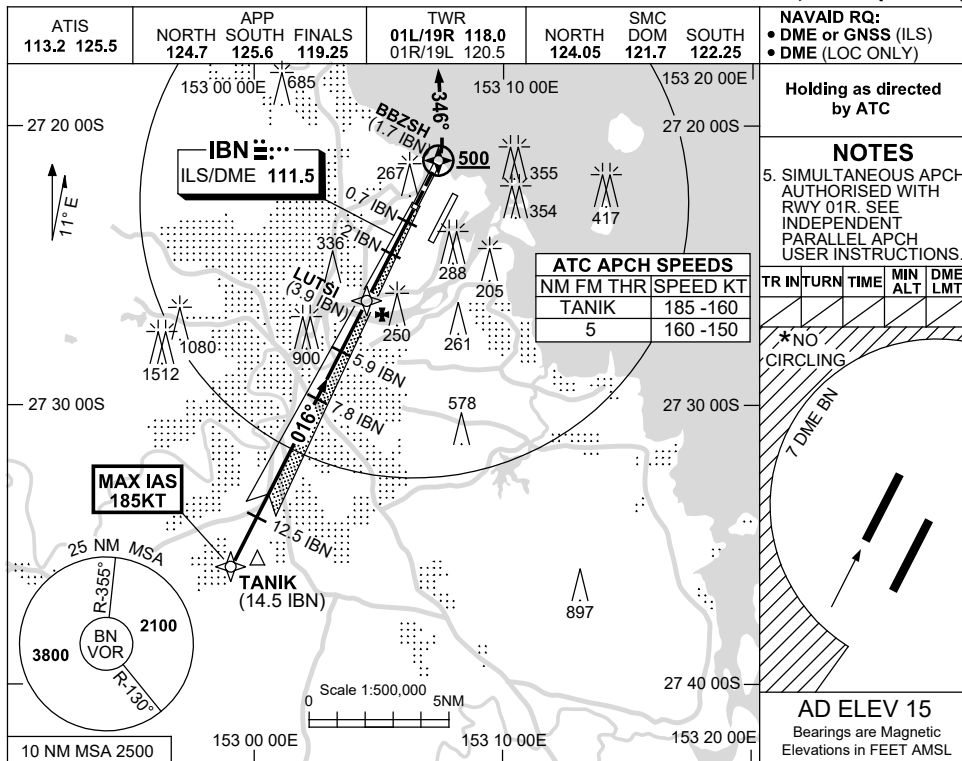


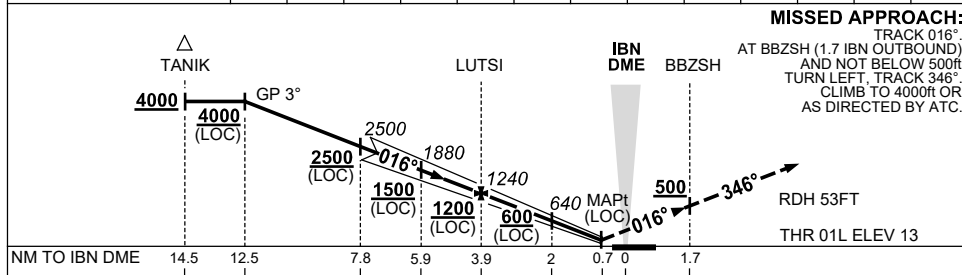
USE QNH

ILS or LOC RWY 01L
BRISBANE, QLD (YBBN)

21 MAR 2024



NM TO IBN DME	12.5	12	11	10	9	7.8	7	5.9	5	3.9	3	2	1.3
ALT (3° APCH PATH)	4000	3830	3510	3200	2880	2500	2240	1880	1600	1240	970	640	430



CATEGORY	A	B	C	D
S-I ILS		220 (207-0.8)	550 RVR	
S-I LOC		430 (415-1.6)		
CIRCLING *	650 (635-2.4)		780 (765-4.0)	850 (835-5.0)
ALTERNATE ‡	(1135-4.4)		(1265-6.0)	(1335-7.0)

NOTES
 1. MAX IAS: TANIK : 185KT.
 2. CAT D ACFT NO CIRCLING WEST OF 7 DME BN.
 3. SPECIAL ALTN MNM 700/2.5 KM.
 4. ACFT MAY BE RADAR VECTORED TO FNA.

Changes: 2NM STEP DOWN FIX, Editorial.

BBNII06-178